



FUJI Starlink

SUZHOU FUJI PRECISION ELEVATOR CO.,LTD

Add: Dade Industrial Zone, Taoyuan Town, Wujiang District, Suzhou City, Jiangsu Province, China

TEL: 0572-3011-797

WhatsApp: 0086-133 0682-2098

E-MAIL: service@precisionfuji.com

Http: [//www.fujijg.com](http://www.fujijg.com)

It is an ordinary information publication. We keep the right of alter the product design and description at any time.
If there is any dispute out of the literal meaning of any product description, use or quality; the description and alteration of any sales contract,
our company will not bear any responsibilities therefrom.
Because of the restriction of the printing technology if there is any slight difference between the actually machining color and that from this pamphlet,
please take the actual material and color sample as the criterion.

2023.06

FUJI Precision

FUJI PRECISION ELEVATOR

Manufacture elevators for customer's satisfaction





FUJI PRECISION

Manufacture elevators for customer's satisfaction

Suzhou FUJI Precision Elevator Co.,Ltd is a first-class brand specializing in elevator under the Liyang Group, which now owns two manufacturing companies: Suzhou FUJI Precision Elevator Co., Ltd. and Zhejiang Tilson Elevator Co., Ltd.

The company covers an area of more than 400 Acres, and now employs more than 2000 workers. The company has always followed "spirit of excellence, the pursuit of excellence", with a focus on customers, products and services. We aim to provide a diverse range of products, services and support that can be relied upon worldwide.

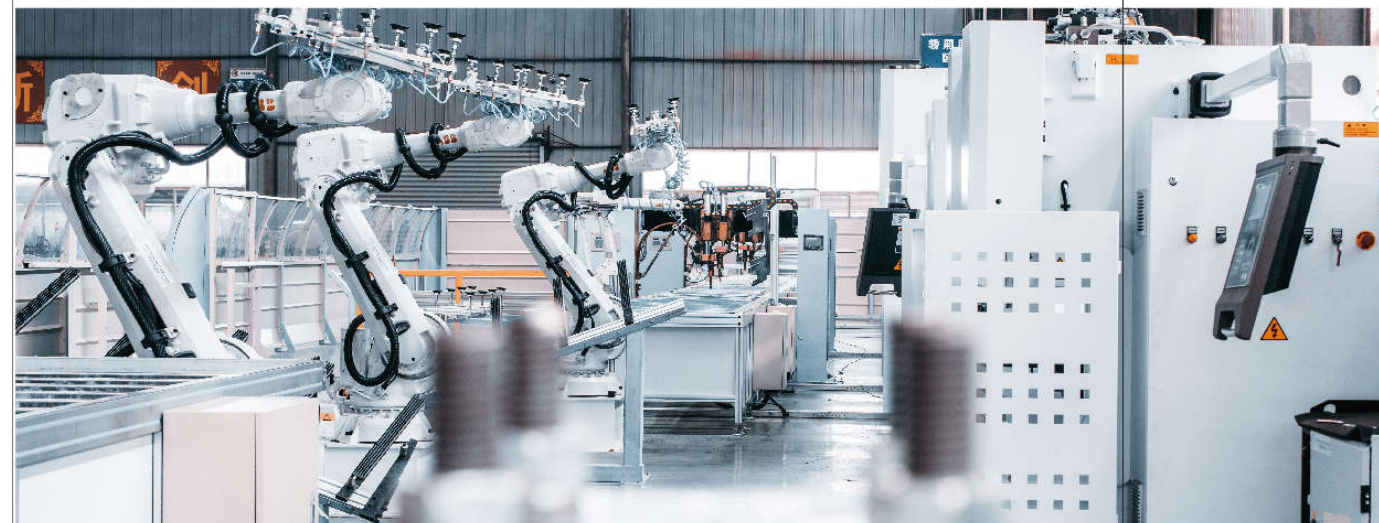
FUJI Precision's products cover a full range of elevator products and services, including high-speed elevators, residential elevators, hospital elevators, cargo elevators, panoramic elevators, escalators, moving walks, villa elevators, platform, lifts for explosive atmospheres and other products. At present, FUJI Precision Elevator has successively developed more than 50 series and hundreds of specifications of elevators, and is committed to serving the development of the city with advanced technology, and its products have been sold well over the world.

STARLINK OF FUJI PRECISION

Team up 100 partners
Build up 100 elevator factories

FUJI Precision elevator is about to launch a new business development model-**FUJI Starlink plan**, is to break the brand monopoly, to break the institutional constraints and technical barriers of elevator manufacturing enterprises.

We are looking for **100 faithful partners** all over the world, to help them improve their comprehensive strength, to support them to establish local elevator manufacturing plants, to achieve the global elevator industry chain, and jointly to build the **FUJI Precision elevator** manufacturing alliance in the elevator industry.



EQUIPMENT TECHNOLOGY

In order to satisfy different requirements from vast global users towards various elevators, persists in standing at the height of international elevator industry. It actively introduces advanced domestic and foreign equipments. It effectively enhances the productivity and product quality. It introduces highly intellectual robot production lines. It fulfills digital management during the products' manufacturing process. It push forward the elevator industry on the track of advancement in the intellectual time advance towards the intellectual times at high speed.



Strict selection

World's Excellent Accessories



Specialization

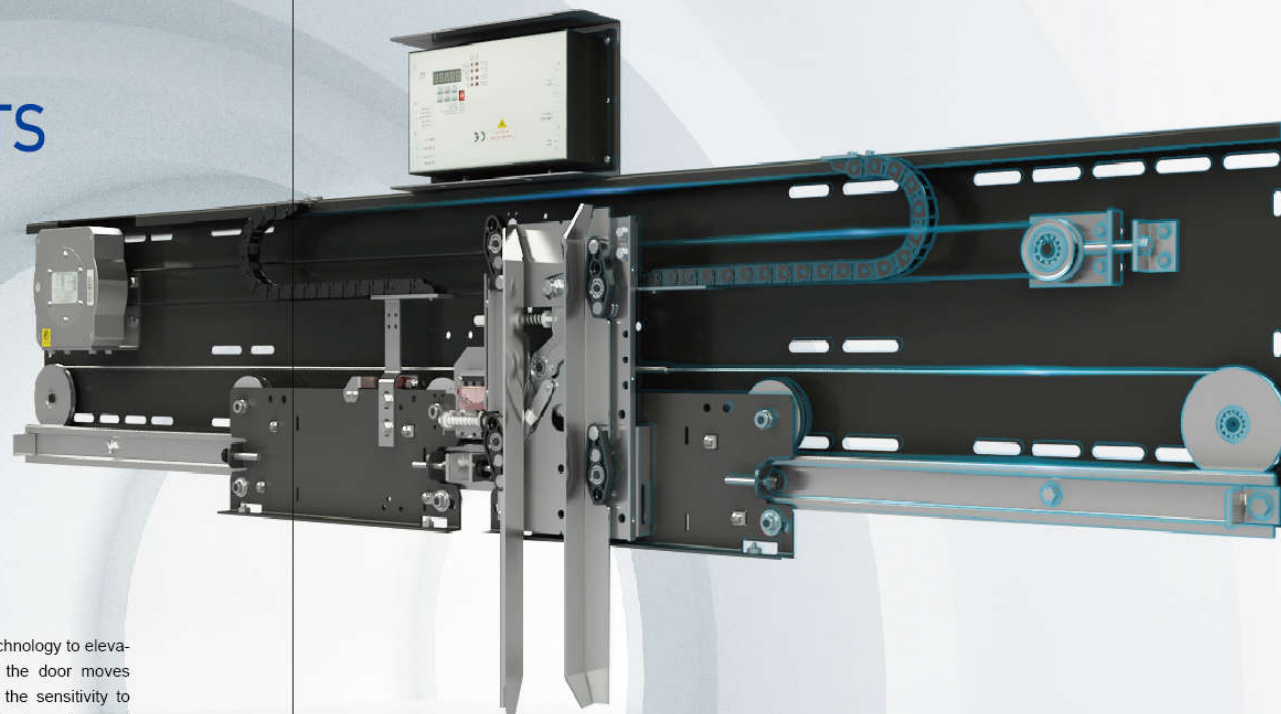
Production Management Manufacturing



High efficiency

Lean production

SAFETY AND COMFORT ENJOY THE COZY MOMENTS



New generation door machine system

It applies the advanced VVVF control technology to elevator door-machine system. It ensures the door moves smoothly and peacefully. It enhances the sensitivity to sudden entering. It adjusts the speed of opening and closing to meet customer's demand. It guarantees the safe and reliable operation.

UCMP prevents from accidental car movement

When elevator is in leveling position and door opens, if elevator moves accidentally, UCMP safety device starts protection immediately. It stops the elevator. It thus enhances the elevator safety and ensures the passengers' security too.

Light-curtain door protection

It utilizes the sensitive and intensive infrared ray curtain. It forms light-curtain protection safety net in front of the elevator door. It sensitively reacts to any person or object that enters into the probing plane with high safety properties, and ensures free entry and exit for passengers.

Intellectual main control system

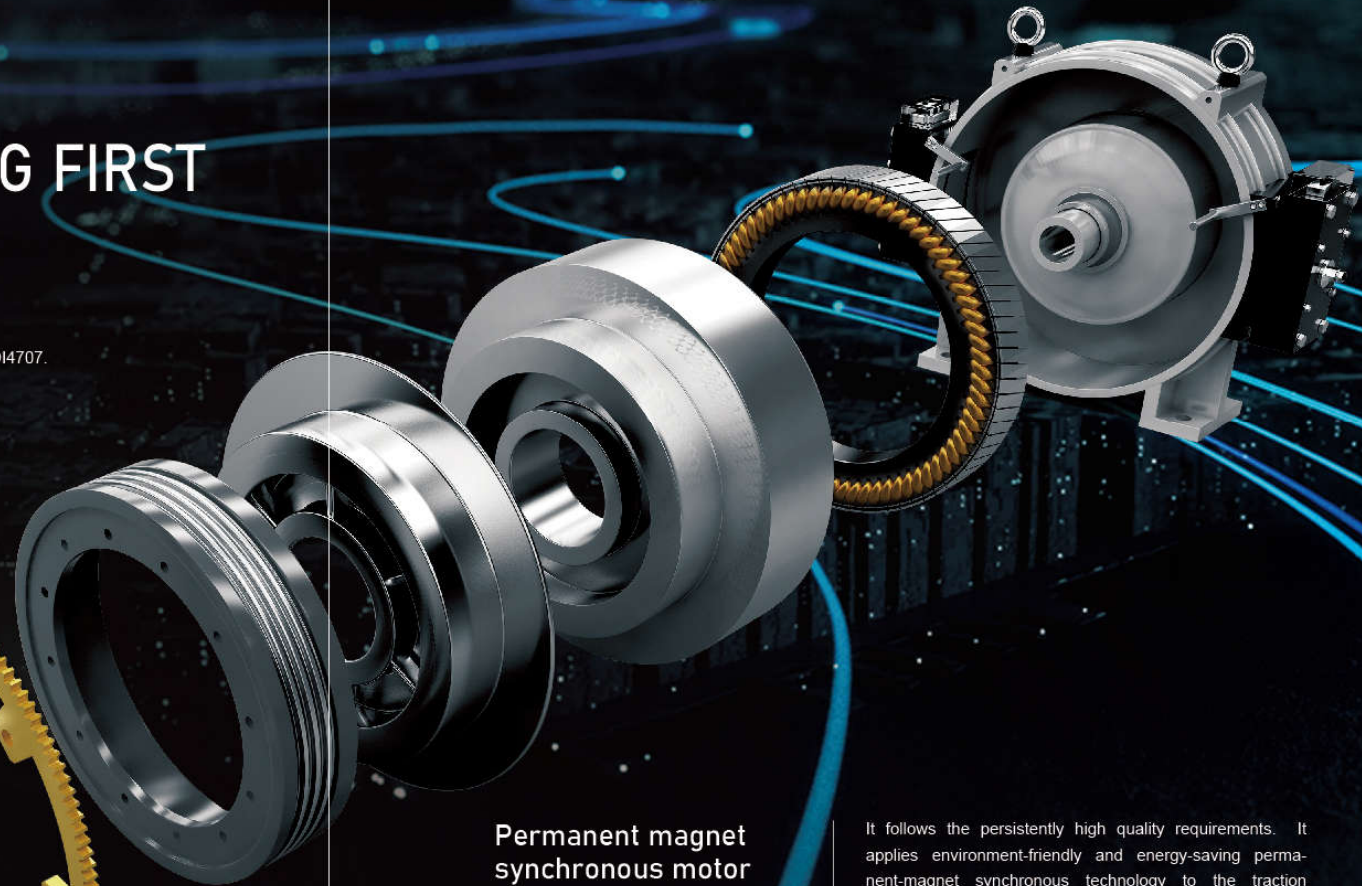
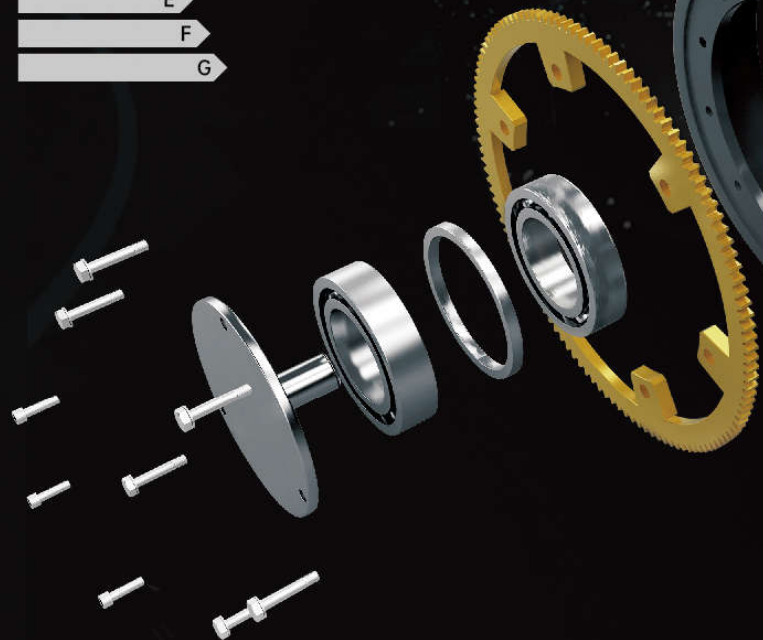
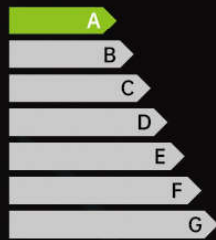
High Integrated 32-digit double-CPU and inter-monitor of master-slave CPU enhance data processing speed. It is more perfect in function and higher in reliability. Inlaid specialist self-diagnostic system can automatically diagnose and display the trouble cause and storage. It is strong in function and convenient in operation.



SUPER FACTORY SMART MANUFACTURING FIRST

Energy efficiency certification

In the standard configuration testing environment, it meets the A-level certification in VDI4707.



Permanent magnet synchronous motor

It follows the persistently high quality requirements. It applies environment-friendly and energy-saving permanent-magnet synchronous technology to the traction machine, door machine etc. it creates a harmonious elevator space.

Energy regenerating feedback

It converts the elevator no-load up-motion or full-load down-motion potential to electric energy through energy regenerating device. It then supplies energy for other devices in the building. It can reduce over 20% of energy consumption.

Sleeping energy-saving program

If nobody makes calling within the fixed time, it automatically shuts off the car lighting and fan. When someone makes calling, it starts automatically. It thus saves the energy during none running period.

SMALL MACHINE ROOM PASSENGER ELEVATOR

Unique small machine room design, using compact dense permanent magnet synchronous gearless traction machine and special design of control cabinet. Reasonable civil engineering layout can achieve the same size of machine room area and shaft, reduce the height of machine room, improve space utilization, and make the building elegant and beautiful.



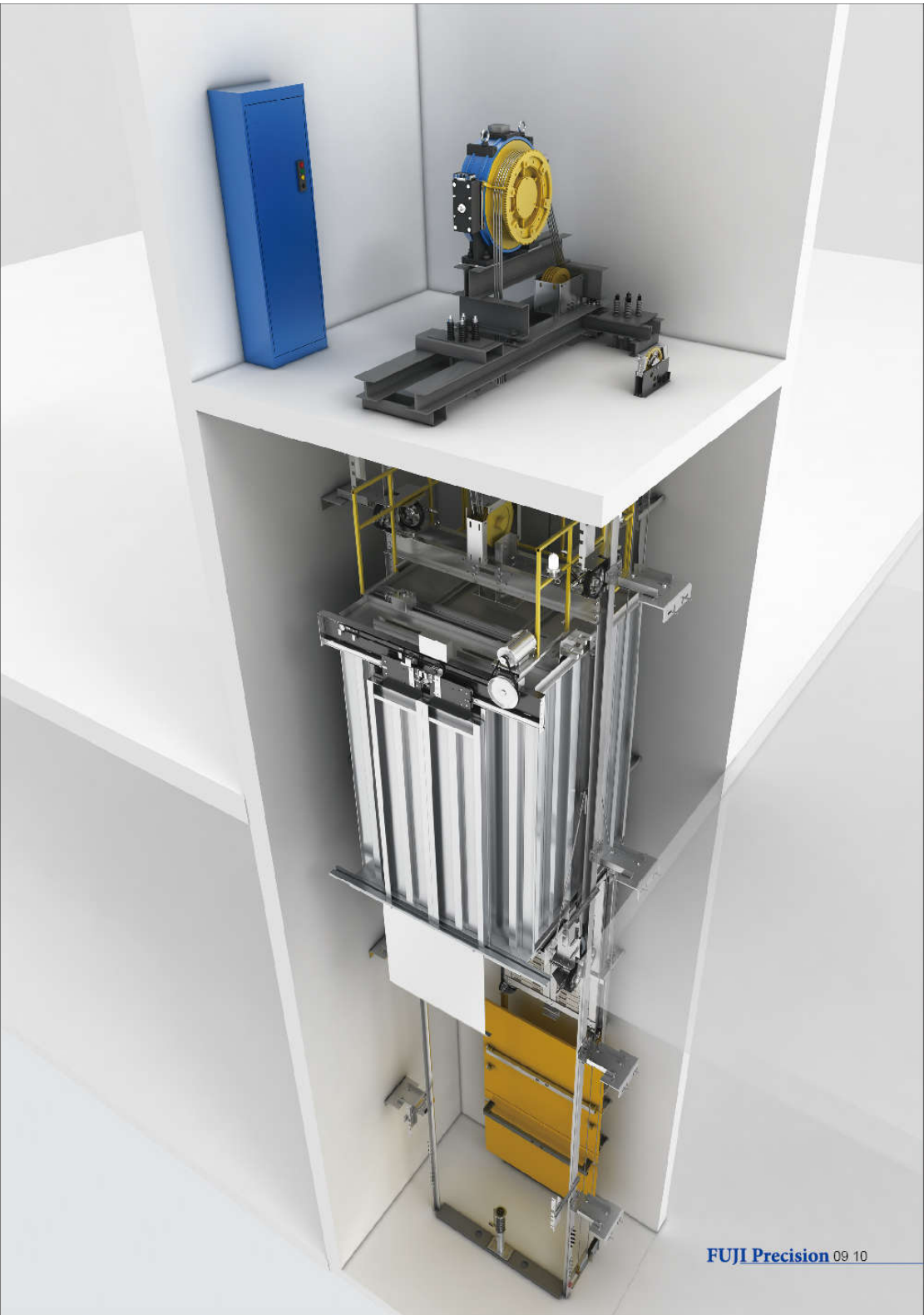
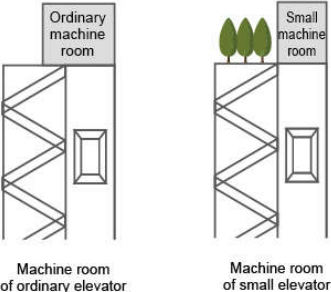
Machine room is only extension of well.
It needs no other space.



It saves the building area and
enhances the design freedom.



It applies the advanced energy-saving technology.
It can fulfill about 30% of energy-saving effects.



MACHINE ROOMLESS PASSENGER ELEVATOR

Machine-room-less elevator series resolves the restriction of the elevator to the building construction, reduces cost, improves space utilization, and provides more possibilities for designers. Saving the space and cost at the same time, it provides the passengers with upper level intellectual, effective and stable travel.



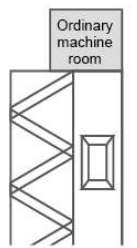
Optimized well design effectively saves 10% the building area.



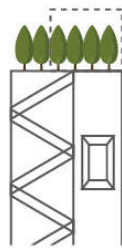
Green drive and energy-saving device save about 30% of energy.



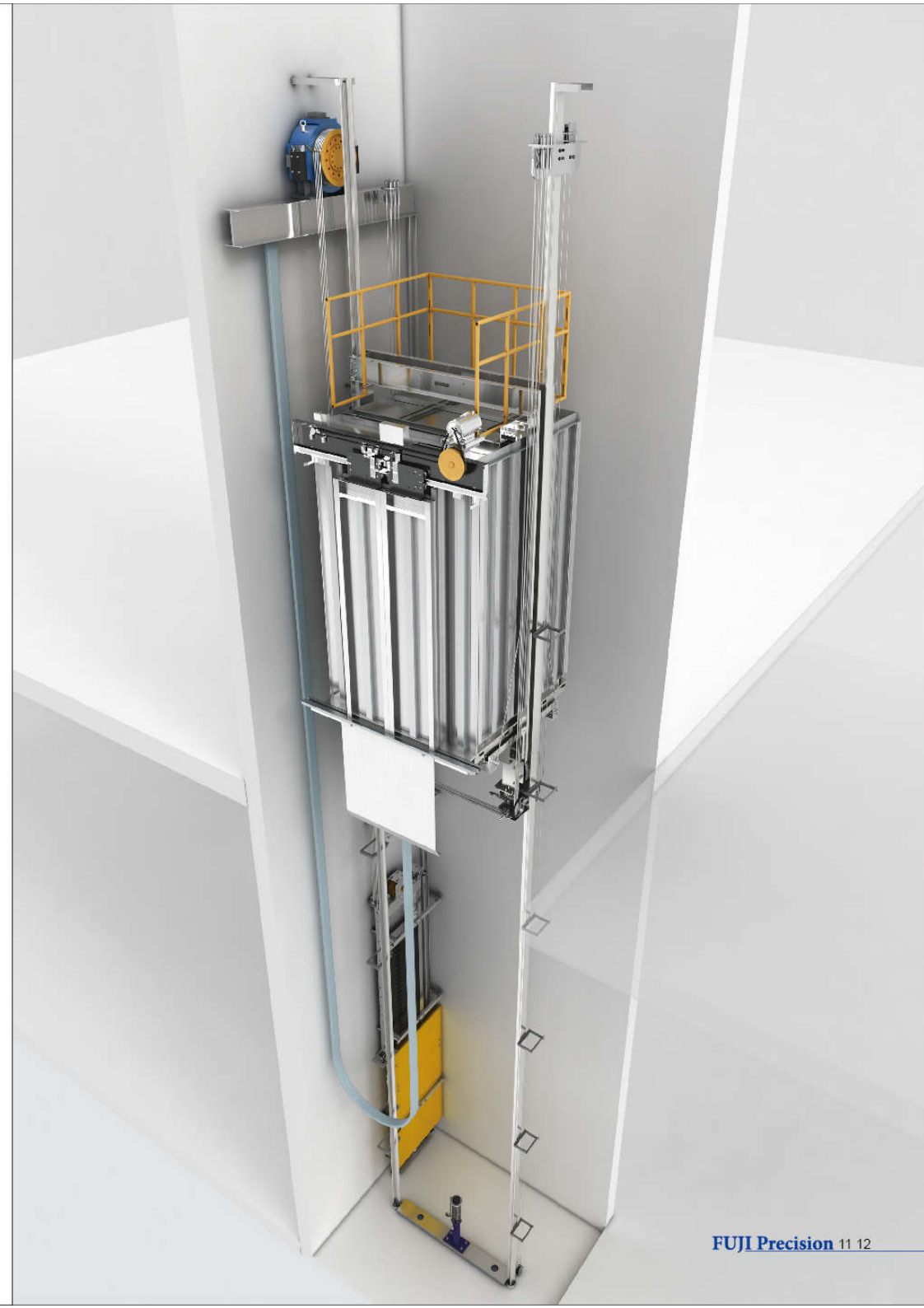
Machine room-less design brings about a freer and more relaxing building design.



Machine room of ordinary elevator



Machine room of machine roomless elevator



HIGH SPEED PASSENGER ELEVATOR

It applies new style
shock-absorbing
device

It sets shock-absorbing device to isolate from vibration between car body and car frame. Vibration produced during elevator operation process has good damping function. It reduces car vibration and reinforces passengers' travel comfort. Combined car wall connection ensures mute effect in car, stable and enclosed air pressure.

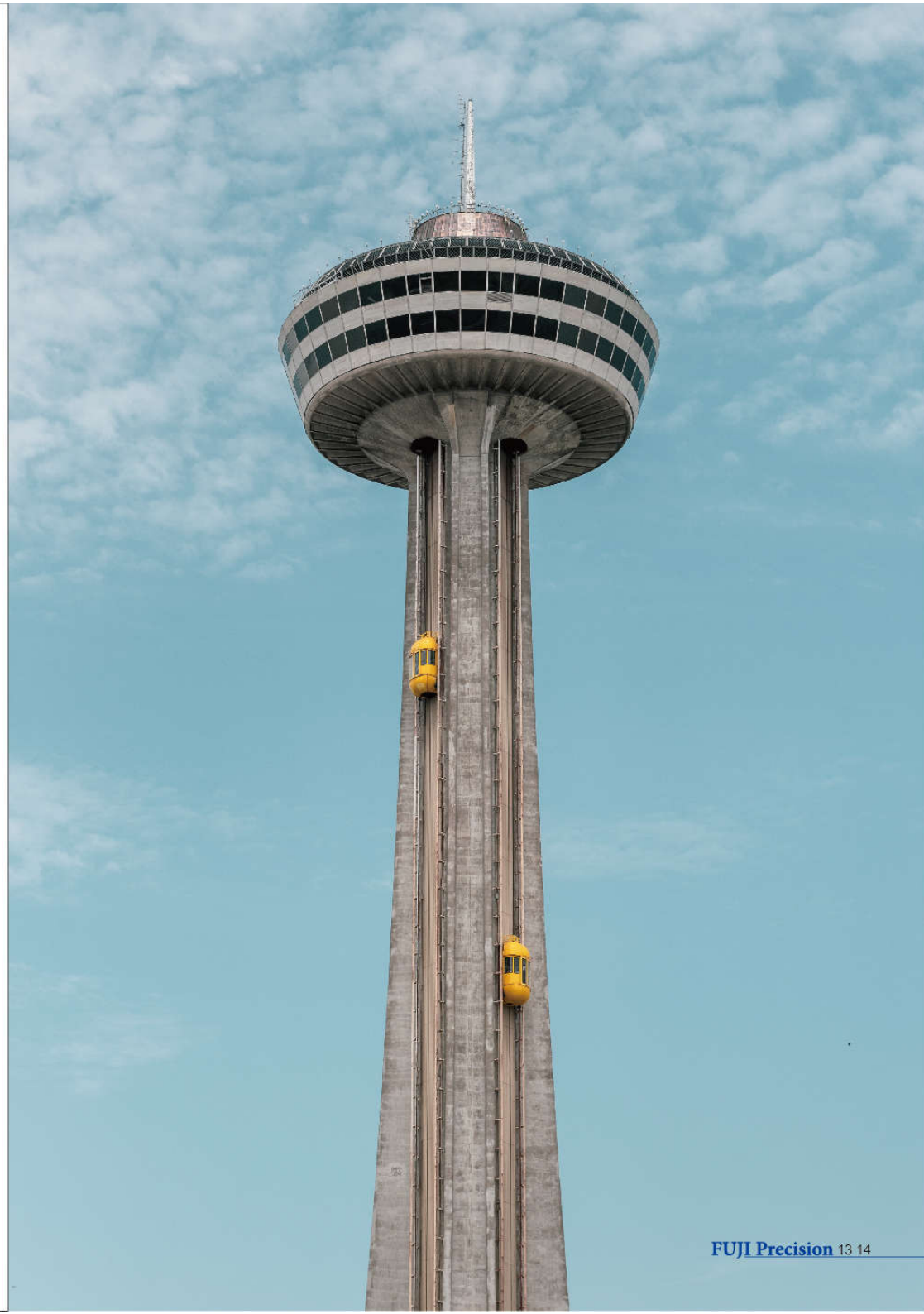
It applies super
high-speed serial
control system

Control system applies 32-digit network intellectual serial communication elevator special-purpose control system. System greatly enhances CPU calculation speed. Four-ply surface mounting technology and CAN bus serial communication guarantee speedy and reliable transmission of a lot of data.



Integrated controller

UP TO RATED SPEED **8.0M/S**



PASSENGER ELEVATOR CAR DECORATION



JG-K001

Ceiling: Hairline stainless steel, acrylic lighting decoration, LED downlight
 Car wall: Hairline stainless steel
 Handrail: Hairline stainless steel single tube
 Floor: PVC



720° Cabin View



JG-K002

Ceiling: Mirror stainless steel, acrylic transparent plate, LED downlight
 Car wall: Hairline stainless steel, mirror etching stainless steel
 Handrail: Hairline stainless steel flat handrail
 Floor: PVC



720° Cabin View



JG-K003

Ceiling: Hairline stainless steel, acrylic lighting decoration, LED downlight
 Car wall: Hairline stainless steel, mirror stainless steel
 Handrail: None
 Floor: PVC



720° Cabin View



JG-K004

Ceiling: Hairline stainless steel, LED downlight
 Car wall: Mirror etching stainless steel, mirror stainless steel
 Handrail: Double circular handrail
 Floor: PVC



720° Cabin View

PASSENGER ELEVATOR CAR DECORATION



JG-K005

Ceiling: Titanium gold mirror stainless steel, acrylic lighting decoration, LED downlight
 Car wall: Titanium gold hairline stainless steel, titanium gold mirror stainless steel
 Handrail: Titanium gold hair stainless steel flat handrail
 Floor: PVC



720° Cabin View



JG-K006

Ceiling: Mirror stainless steel plated with gold, acrylic lighting decoration, LED downlight
 Car wall: Mirror etched stainless steel plated with gold, mirror stainless steel plated with gold
 Handrail: Mirror stainless steel circular tube plated with gold
 Floor: PVC



720° Cabin View



JG-K007

Ceiling: Rose gold hairline stainless steel, acrylic lighting decoration, LED downlight
 Car wall: Rose gold hairline stainless steel, rose gold mirror stainless steel, rose gold mirror etched stainless steel
 Handrail: Rose gold and wood grain combination handrail
 Floor: PVC



720° Cabin View



JG-K008

Ceiling: Titanium gold hairline stainless steel, acrylic lighting decoration, LED downlight
 Car wall: Titanium gold hairline stainless steel, titanium gold etched mirror stainless steel
 Handrail: None
 Floor: PVC



720° Cabin View

PASSENGER ELEVATOR CAR DECORATION



JG-K009

Ceiling: Champagne gold hairline stainless steel, acrylic lighting decoration
 Car wall: Champagne gold mirror stainless steel, champagne gold etched mirror stainless steel
 Handrail: Champagne gold and wood grain combination handrail
 Floor: PVC



720° Cabin View



JG-K010

Ceiling: Bronze hairline stainless steel, acrylic lighting decoration, LED downlight
 Car wall: Bronze hairline stainless steel, bronze mirror etching stainless steel
 Handrail: Bronze hairline stainless steel single tube
 Floor: PVC



720° Cabin View



JG-K011

Ceiling: Black titanium mirror stainless steel, acrylic light-emitting panel, LED downlight
 Car wall: Black titanium hairline stainless steel, black titanium mirror stainless steel, lamp strip
 Handrail: None
 Floor: PVC



720° Cabin View



JG-K012

Ceiling: Black titanium mirror stainless steel, acrylic light-emitting panel
 Car wall: Hairline stainless steel, black titanium mirror etched stainless steel
 Handrail: None
 Floor: PVC



720° Cabin View

PASSENGER ELEVATOR CAR DECORATION



JG-K013

Ceiling: Metal paint design, stainless steel frame, hidden light strip
 Car wall: Fabric hard bag design inlaid with metal strips, rose gold and antique copper sandblasting stainless steel inlaid with metal strips
 Handrail: Metal embedded handrail
 Floor: PVC



720° Cabin View

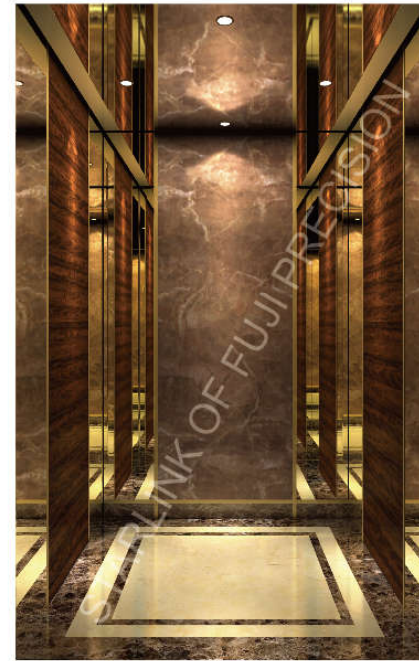


JG-K014

Ceiling: Hairline stainless steel, light bronze mirror stainless steel, acrylic lighting decoration
 Car wall: Hairline stainless steel, light bronze mirror stainless steel, wood grain steel plate
 Handrail: Light bronze hair pattern flat handrail hidden light band
 Floor: PVC



720° Cabin View



JG-K015

Ceiling: Bronze baked enamel steel plate, mirror stainless steel, LED downlight
 Car wall: Titanium gold mirror stainless steel, marble, wood veneer
 Handrail: None
 Floor: PVC



720° Cabin View



JG-K016

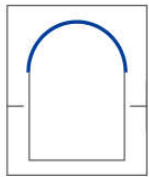
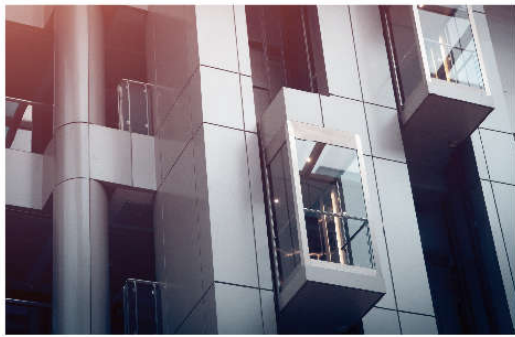
Ceiling: White latex paint, rose gold mirror stainless steel
 Car wall: Wood grain steel plate, rose gold mirror stainless steel, atmosphere light
 Handrail: None
 Floor: PVC



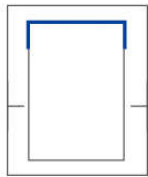
720° Cabin View

PANORAMIC ELEVATOR

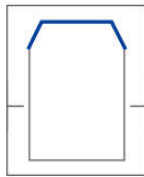
FUJI Precision panoramic elevator applies highly secure laminated glass cabin wall material. It prevents from energy loss with effective sound-isolation. It adopts large-area cabin wall glass to create the best sight-seeing vision. It is smooth in outline design. It adds extra beauty and charm for the building in the travel process.



Semi-circular



Square



Cutting-angle

Various types of cabin are available for your choice and meet different needs. The overstriking line in each picture is transparent safety glass.



PANORAMIC ELEVATOR CAR DECORATION



JG-G001

Upper and lower cover:
Hairline stainless steel,
decoration light

Observation wall:
6 + 6 laminated safety glass

Decoration ceiling:
Hairline stainless steel,
acrylic lighting decoration

Car wall:
Hairline stainless steel

Handrail:
Stainless steel double tube

Floor:
PVC



JG-G002

Upper and lower cover:
Titanium gold hairline
stainless steel

Observation wall:
6 + 6 laminated safety glass

Decoration ceiling:
Titanium gold hairline stainless steel,
acrylic lighting decoration

Car wall:
Titanium gold mirror stainless steel

Handrail:
Titanium gold stainless steel
single tube

Floor:
PVC



JG-G003

Upper and lower cover:
Steel plate baked enamel

Observation wall:
6 + 6 laminated safety glass

Decoration ceiling:
Steel plate baked enamel,
acrylic board

Car wall:
Hairline stainless steel

Frame glass door:
5+5 laminated safety glass

Handrail:
Stainless steel single tube

Floor:
PVC

JG-G004

Upper and lower cover:
Hairline stainless steel,
acrylic lighting decoration

Observation wall:
6 + 6 laminated safety glass

Decoration ceiling:
Hairline stainless steel,
acrylic arch roof, LED downlight

Car wall:
Hairline stainless steel

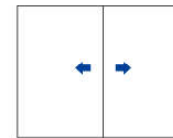
Handrail:
Stainless steel single tube

Floor:
PVC

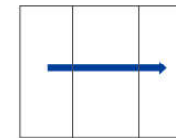


HOSPITAL ELEVATOR

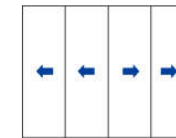
Considering the uniqueness of the hospital environment, FUJI Precision adopts stricter standard for hospital elevators. Focusing on human-oriented design, FUJI Precision elevators precisely controls elevator running speed and attentively makes comfortable space for passengers.



Center opening



Telescopic opening



4 panels center opening



Side opening

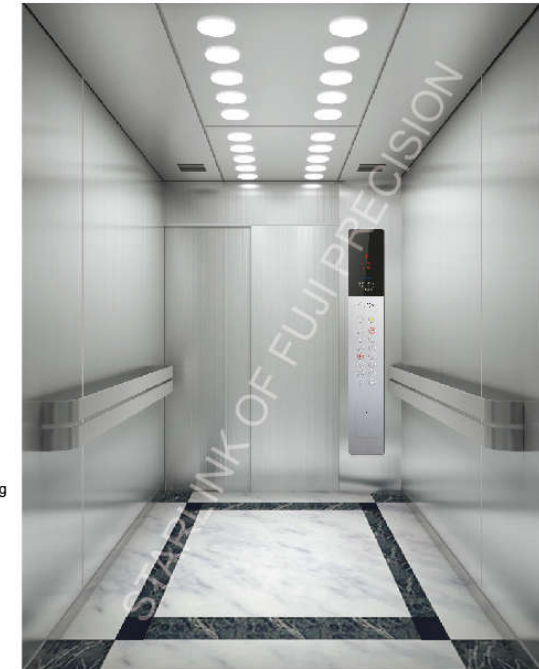
JG-B001

Ceiling:
Hairline stainless steel, LED lighting

Car wall:
Hairline stainless steel

Handrail:
Double flat stainless steel

Floor:
PVC



VILLA ELEVATOR

Villa elevator can let you enjoy the comfort. The special frequency conversion system precisely controls the elevator's running state and enhances the comfortable experience in various directions. Low noise, easy installation, your wonderful home environment. Not only save the design and construction cost of the machine room, but also make full use of your building, small footprint, safe and reliable, which will be FUJI Precision for you to think of.

CHOICE INTERNATIONAL QUALITY



1 Steel-band traction machine

Adopting advanced permanent magnet synchronous gearless traction host, low noise, low vibration, and stable operation; No need for lubricating oil, energy-saving and environmentally friendly; The brake with upward overspeed protection function ensures safer operation.



3 Steel band

Polyurethane material layer, without lubrication, has a lifespan that doubles that of traditional steel wire ropes; easier to bend, more energy-efficient, and more efficient.



5 Safety gear

One of the protective devices that comply with the national type test certification and activate emergency braking to ensure passenger safety when the operating speed of the elevator exceeds the set limit or the suspension rope breaks or relaxes.



2 Control cabinet

Adopting high-performance intelligent vector variable frequency control technology for elevators, combined with advanced algorithms such as motor vector control and smooth curve calculation, to ensure comfortable, stable, and intelligent elevator operation.



4 Buffer

One of the multiple safety protection devices for elevators, it can maximize the absorption of abnormal impact energy and reduce the risk of elevator fall safety.



6 Car

Adopting galvanized sheet body riveting process instead of welding process, which is safer, more reliable, energy-saving and environmentally friendly; Low noise and comfortable operation;



Traction type traction machine

Adopting advanced permanent magnet synchronous gearless traction host, low noise, low vibration, and stable operation; No need for lubricating oil, energy-saving and environmentally friendly; The brake with upward overspeed protection function ensures safer operation.



Wire rope

Through the dedicated fatigue life test of elevator steel ropes, it meets national standards and uses specialized friction grease with a certain friction coefficient, which has a long service life, safety, and reliability.



Guide Shoe

Adopting polymer high wear-resistant composite nylon material, it has strong wear resistance and good comfort.



Gantry frame

Using finite element analysis to ensure a safer and more stable cabin.



Safety gear

One of the protective devices that comply with the national type test certification and activate emergency braking to ensure passenger safety when the operating speed of the elevator exceeds the set limit or the suspension rope breaks or relaxes.



Speed limiter

It is one of the protective devices that meets the national type test certification. When the operating speed of the elevator exceeds the set limit or the suspension rope breaks and relaxes, it will act in conjunction with the safety gear, emergency braking, and ensure passenger safety.



Control cabinet

Adopting high-performance intelligent vector variable frequency control technology for elevators, combined with advanced algorithms such as motor vector control and smooth curve calculation, to ensure comfortable, stable, and intelligent elevator operation.



Door machine

Adopting the most advanced AC permanent magnet and VVVF variable frequency control technology, it operates safely, comfortably, with low noise, and stable and reliable performance.



Landing door

The door lock has passed 1 million life tests and obtained CE certification, while the landing door has passed the 45KG pendulum impact test, ensuring safety and durability;



Counterweight

By calculating the balance coefficient in accordance with national standards, it ensures that the weight and payload of the car are balanced, reducing energy consumption and motor power loss.

VILLA ELEVATOR CAR DECORATION



JG-V001

Ceiling: Mirror stainless steel ,
acrylic lighting decoration, LED downlight
Car wall: Hairline stainless steel, mirror stainless steel
Handrail: None
Floor: PVC (optional marble)



720° Cabin View



JG-V002

Ceiling: Steel plate baked enamel, beige make-up
steel plate, section material lighting decoration
Car wall: White make-up steel plate, beige make-up
steel plate, black titanium hairline stainless
steel decorative strip
Handrail: None
Floor: PVC (optional marble)



720° Cabin View



JG-V003

Ceiling: Champagne gold mirror stainless steel,
acrylic light-emitting panel
Car wall: Champagne gold hairline stainless steel,
champagne gold mirror etched stainless steel
Handrail: None
Floor: PVC



720° Cabin View



JG-V004

Ceiling: Titanium gold mirror stainless steel,
return light band, LED downlight
Car wall: Titanium gold hairline stainless steel,
titanium gold mirror stainless steel,
titanium gold mirror etched stainless steel
Handrail: None
Floor: PVC



720° Cabin View

VILLA ELEVATOR CAR DECORATION



JG-V005

Ceiling: Steel plate baked enamel, bronze stainless steel coil side, hidden lamp, LED downlight

Car wall: Bronze hairline stainless steel, bronze mirror stainless steel, LED strip

Handrail: None

Floor: PVC



720° Cabin View



JG-V006

Ceiling: Roes gold hairline stainless steel, LED light, hidden lamp

Car wall: Roes gold hairline stainless steel, art glass, hidden lamp

Handrail: Roes gold hairline stainless steel

Floor: PVC



720° Cabin View



JG-V007

Ceiling: Mirror stainless steel, acrylic lighting decoration, LED downlight

Car wall: Aluminum alloy (bright silver) vertical column, toughened glass combination

Handrail: None

Floor: PVC



720° Cabin View



JG-V008

Ceiling: Piano painted steel plate, embedded light band, LED downlight

Car wall: Piano painted steel plate, safety laminated glass

Handrail: Flat handrail

Floor: Antique solid wood parquet floor



720° Cabin View

MAN-MACHINE INTERFACE



JG-P001



JG-L001



JG-P002



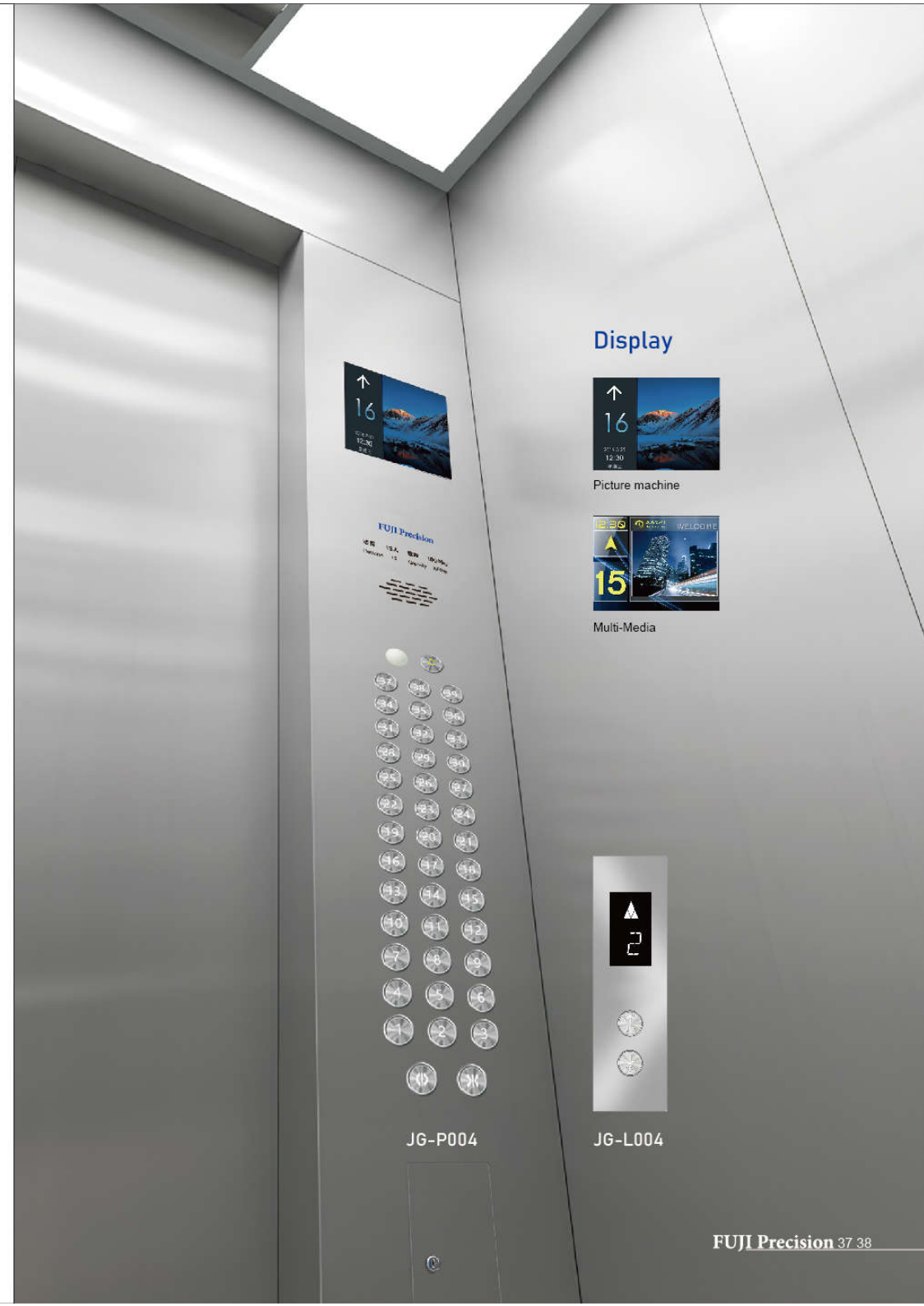
JG-L002



JG-P003



JG-L003



Display



Picture machine



Multi-Media

JG-P004

JG-L004

MAN-MACHINE INTERFACE



JG-P005



JG-X01



JG-X02



JG-L005



JG-L005A



JG-B01



JG-B02



JG-B03



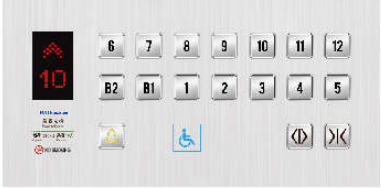
JG-B04



JG-GR1



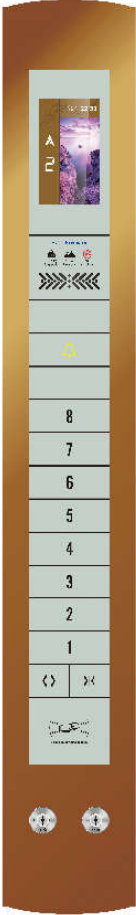
JG-GR2



JG-P009



JG-P010



JG-P006



JG-L006



JG-P007



JG-L007



JG-P008



JG-L008

LANDING DOOR SERIES



JG-TM01



JG-TM02



JG-TM03



JG-TM04



JG-TM05



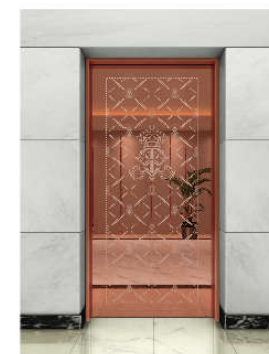
JG-TM06



JG-TM07



JG-TM08



JG-TM09



JG-TM10



JG-TM11



JG-TM12

CEILING SERIES



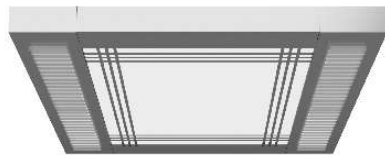
JG-C001



JG-C002



JG-C003



JG-C004



JG-C005



JG-C006



JG-C007



JG-C008



JG-C009



JG-C010

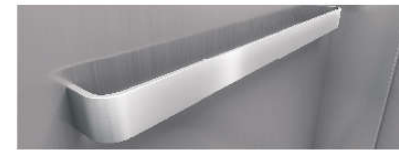
HANDRAIL SERIES



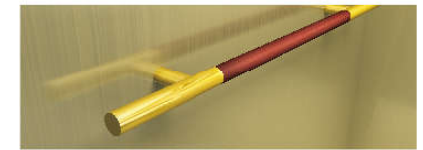
JG-H001



JG-H002



JG-H003



JG-H004

FLOOR SERIES



JG-F001



JG-F002



JG-F003



JG-F004



JG-F005



JG-F007



JG-F006



JG-F008

FREIGHT ELEVATOR

The firm and durable cabin

High strength plate ensures the firm and durable cabin. In addition, FUJI Precision freight elevator specially designs crash barrier to implement multi-protection to the cabin.

Highly accurate leveling

Leveling accuracy can be controlled within millimeter-sized range.

Energy-saving

Frequency conversion freight elevator applies VVVF and speed regulative technology. It thus greatly reduces the elevators running power consumption and power supply capacity. Compared with the traditional AC-2 speed type elevator, it can save 30%-50% energy.

Large door width

Adopt multi-panel cabin doors to reach the maximum door opening width, making it easy for handling large goods.



FREIGHT ELEVATOR CAR DECORATION

JG-FC01

- Ceiling:
Paint steel
- Car wall/Car door:
Paint steel
- Illumination:
Energy-saving light
- Door opening mode:
Side opening
- Floor:
Checkered plate



JG-FC02

- Ceiling:
Hairline stainless steel
- Car wall/Car door:
Hairline stainless steel
- Illumination:
Energy-saving light
- Door opening mode:
Center-opening & double folded type
- Floor:
Checkered plate



DUMBWAITER

It deducts safe, mute, steady, cautious travel

FUJI Precision dumbwaiter elevator provides small freight elevators in various buildings with the prompt, economical and convenient vertical transport. It greatly saves time and labor resources. It is widely applicable for delivering food and drinks, dining ware, daily commodities etc. in the hotel, restaurant, bank, hospital and so on.

Rich specifications and models

Load range: 100kg-300kg. Door modes can be divided into windowsill type for direct entry/exit of the goods and floor type for delivery carts.

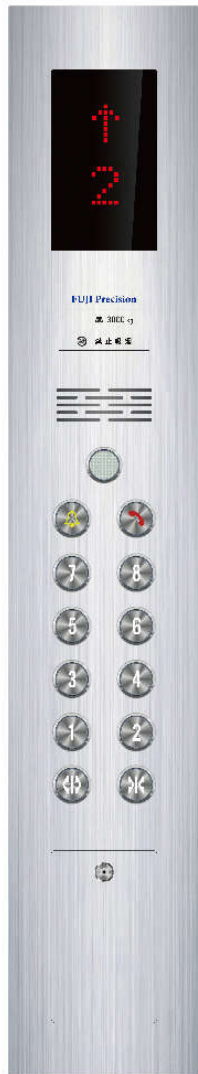


Window type (Up and down directly separated)



Ground type (Up and down directly separated)

OPERATION PANEL

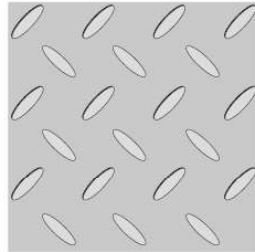


JG-HC01

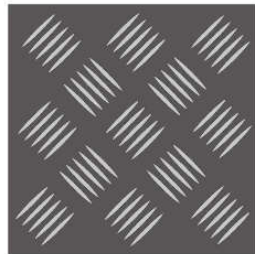


JG-HW01

Floor



Ordinary checkerd steel plate I (Standard)



Ordinary checkerd steel plate II (Optional)

Crash barrier of elevator



Wooden



Black rubber

LANDING DOOR SERIES



Center opening



Side opening



Double-folded center opening type



3-Folded center opening type

Color card series



JG-S001

JG-S002

JG-S003

JG-S004

JG-S005

JG-S006

Light gray

Cream-colored

Blue

Apple green

Computer gray

White



ESCALATOR

FUJI Precision escalator applies the advanced technology, design concept for manufacture in the world. It features as smooth running, low noise, durable, convenient repair etc. It grants you to appreciate the outstanding charm and deluxe manner of modern buildings by fine and exquisite structure, consummate elevator path, delicate belt, deluxe and attractive outline. It provides the passengers with a bright, comfortable, brand-new feeling.



Attraction of precision structure

High strength metal structure constructs precision sizes. Super consciousness aesthetics design perfectly combines with the building.



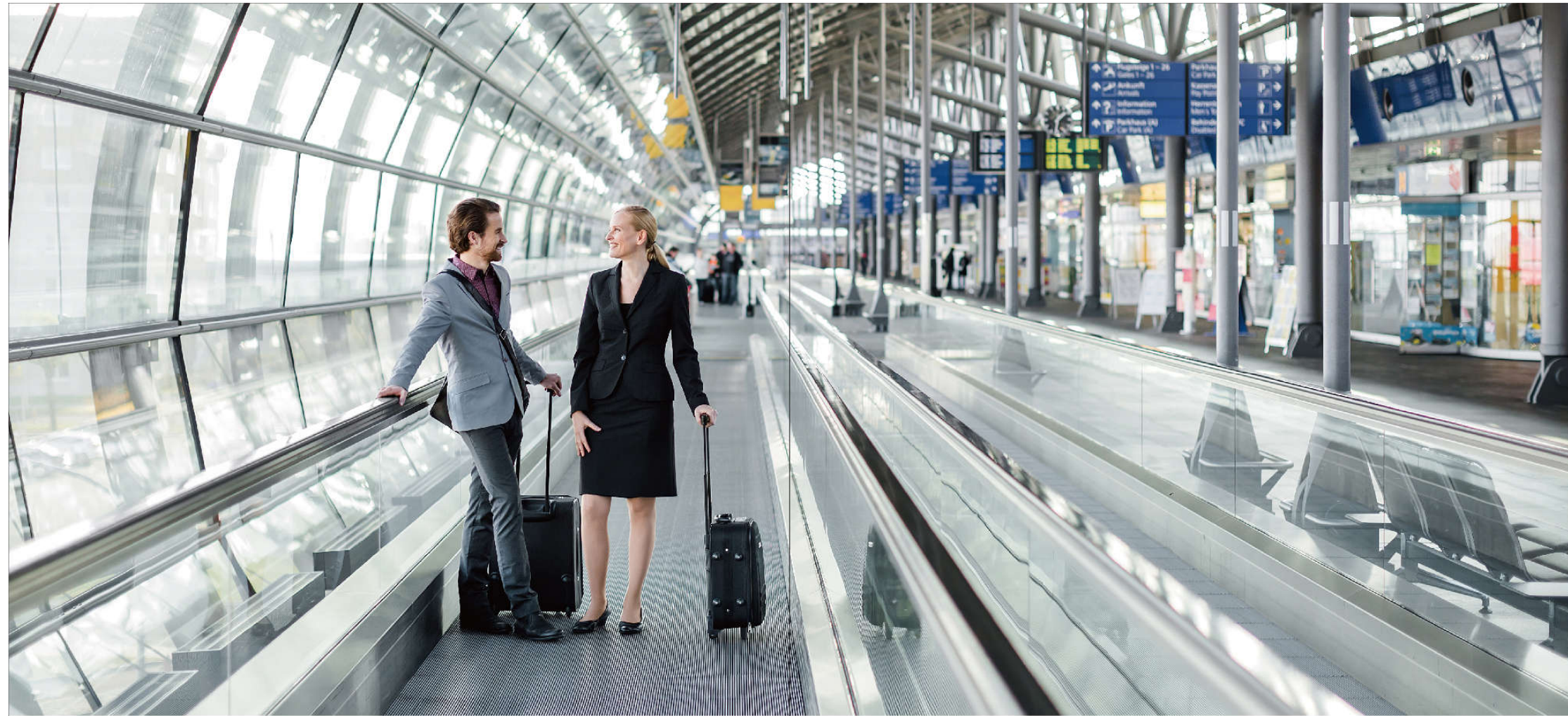
Attraction of effective safety

It installs trouble display. It can accurately analyze the running condition and displays it in the screen. It thus ensures the prompt and effective maintenance.



Attraction of high-tech induction

Automatic start / stop device is near floor plate. It is installed with automatic induction sensor. When the passenger gets close to it, it automatically induces, tests and operates. It automatically stops when the passenger leaves.



MOVING WALK

FUJI Precision moving walk can not only meet the transportation problem of large flow of people, and can meet walking long distances and transport strollers, wheelchairs, shopping cart, baggage car and other vehicles, giving smooth and convenient travel on various occasions.



Extremely strong conveying capacities

Moving walk has extremely strong conveying capacity. It can satisfy the traffic requirements of modern people in various aspects. It is applicable for the airport, shopping center, hotel, recreation center etc.

Its unique and innovative design has minimum requirements to the space. Its firm structure is strong enough for any kind of load. At the same time of conveying regional shopping centers and public transport station, it saves every piece of precious space. It is fully considered for the requirements of modern city traffic.

0-12° angle of inclination can be freely chosen according to different use and environment in the building.

ELEVATOR FUNCTION

Standard Function

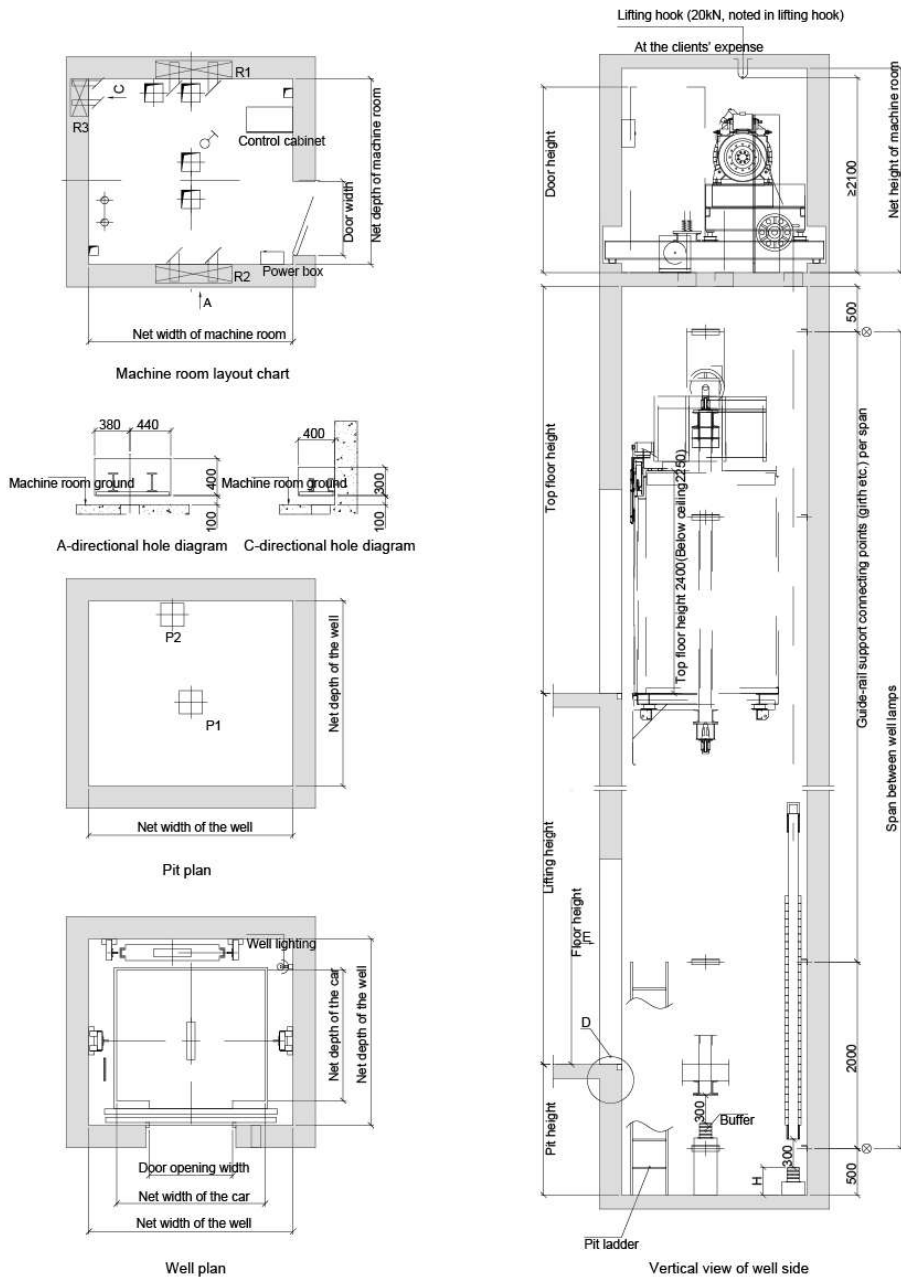
VVF drive	Motor rotating speed can be precisely adjusted to get smooth speed curve in lift start, travel and stop and gain the sound comfort.
VVF door operator	Motor rotating speed can be precisely adjusted to get the more gentle and sensitive door machine start / stop.
Independent running	The lift can not respond to outer calling, but only respond to the command inside the car through the action switch.
Automatic pass without stop	When the car is crowded with the passengers or the load is close to preset value, the car will automatically pass the calling landing in order to keep maximum travel efficiency.
Automatically adjust door opening time	Door-open time can be automatically adjusted according to the difference between landing calling or car calling.
Reopen with hall call	In the door shutting process, press reopen with hall call button can restart the door.
Express door closing	When the lift stops and opens the door, press door-shut button, the door will be closed immediately.
Car stops and door open	The lift decelerates and levels, the door only opens after the lift comes to a complete stop.
Car arrival gong	Arrival gong in the car top announces that the passengers arrive.
Command register cancel	If you press the wrong floor command button in the car, twice continuous pressing of same button can cancel the registered command.
Photocell protection	In the door open and shut period, infrared light that covers the whole door height is used to probe the door protection device of both the passengers and objects.
Designated stop	If the lift can not open the door in the destination floor out of some reason, the lift will close the door and travel to the next designated floor.
Overload holding stop	When the car is overload, the buzzer rings and stops the lift in the same floor.
Anti-stall timer protection	The lift stops operation due to slippery traction wire rope.
Start protection control	If the lift does not leave door zone within the designated time after it gets started, it will stop the operation.
Inspection operation	When the lift enters into inspection operation, the car travels at inching running.
Fault self-diagnosis	The controller can record 62 latest troubles so as to quickly remove the trouble and restore the lift operation.
Repeated door closing	If the lift can not close the door due to certain obstacle or interference, the lift will reopen or re-shut the door until sundries are eliminated.
Up/down over-run and final limit protection	The device can effectively prevent from the lift's surging to the top or knocking the bottom when it is out of the control. It results in the more safe and reliable lift travel.
Down over-speed protection device	When the lift downs 1.2 times higher than the rated speed, this device will automatically cut off control mains, stop the motor running so as to stop lift down at over-speed. If the lift continues to down at over-speed, and the speed is 1.4 times higher than rated speed, safety tongs act to force the lift stop in order to ensure the safety.
Upward over-speed protection device	When the lift ups 1.2 times higher than rated speed, the device will automatically decelerate or brake the lift.
Micro-touch button for car call and hall call	Novel micro-touch button is used for operation panel command button in the car and landing calling button.
Floor and direction indicator inside car	The car shows the lift floor location and current travel direction.
Floor and direction indicator	The landing shows the lift floor location and current travel direction.
Emergency car lighting	Emergency car lighting automatically activated once power failure.
Inching running	When the lift enters into emergency electric operation, the car travels at low speed inching running.

Five way intercom	Communication amid car, car top, lift machine room, well pit and rescue duty room through walkie-talkie.
Bell	In emergency conditions, if bell button above car operation panel is continuously pressed, electric bell rings on top of the car.
Fire emergency return	If you start key switch in main landing or monitor screen, all the callings will be cancelled. The lift directly and immediately drives to the designated rescue landing and automatically opens the door.
Car ventilation, light automatic shut off	If there is no calling or command signal within the stipulated time, the car fan and lighting will be automatically closed in order to save the energy.
Remote shut-off	The lift can be called to main landing (after finishing the service) through the key switch and automatically exists the service.

Optional Function

Auto Rescue Device(ARD)	In normal power failure, the chargeable battery supplies the lift power. The lift drives to the nearest landing.
Anti-nuisance	In the light lift load, when three more commands appear, in order to avoid the unnecessary parking, all the registered callings in the car will be cancelled.
Open the door in advance	When the lift decelerates and enters into door open zone, it automatically opens the door to enhance the travel efficiency.
Direct parking	It completely accords with distance principle with no crawling in the leveling. It greatly enhances the travel efficiency.
Group control function	When three or more same model lift groups are controlled in use, the lift group can automatically choose the most appropriate response. It avoids the repeated lift parking, reduces the passengers' waiting time and increases the travel efficiency.
Duplex control	Two sets of same model lifts can unanimously respond the calling signal through the computer dispatch. In this way, it reduces the passengers' waiting time to the greatest extent and enhances the travel efficiency as well.
On-duty peak service	Within the preset on-duty time, upward transport from the home landing is extremely busy. The lifts are continuously dispatched to the home landing in order to satisfy on-duty peak service.
Off-duty peak service	Within the preset off-duty period, the lifts are continuously dispatched to top floor in order to satisfy off-duty peak service.
Door open time extending	Press special button in the car, the lift door keeps open for certain period of time.
Voice announcer	When the lift normally arrives, voice announcer informs the passengers about the relevant information.
Car assistant operation box	It is used in the large loading weight lifts or the lifts with crowded passengers so that more and more passengers can use the car.
Operation box for the handicapped	It is convenient for the wheelchair passengers and those who have vision problems.
Intelligent calling service	The car command or hoist-way calling can be locked or connected through special Intelligent Input.
IC card control function	All (partial) landings can only input car commands through IC Card after the authorization.
Remote monitor	The lift long-distance monitor and control can be fulfilled through modem and telephone. It is convenient for the factories and service units to timely know the travel conditions of every lift and promptly take the corresponding measures.
Remote control	The lift can have independent travel according to the specific requirements through operation monitor screen (optional).
Camera function in the car	The camera is installed in the car to monitor the car conditions.

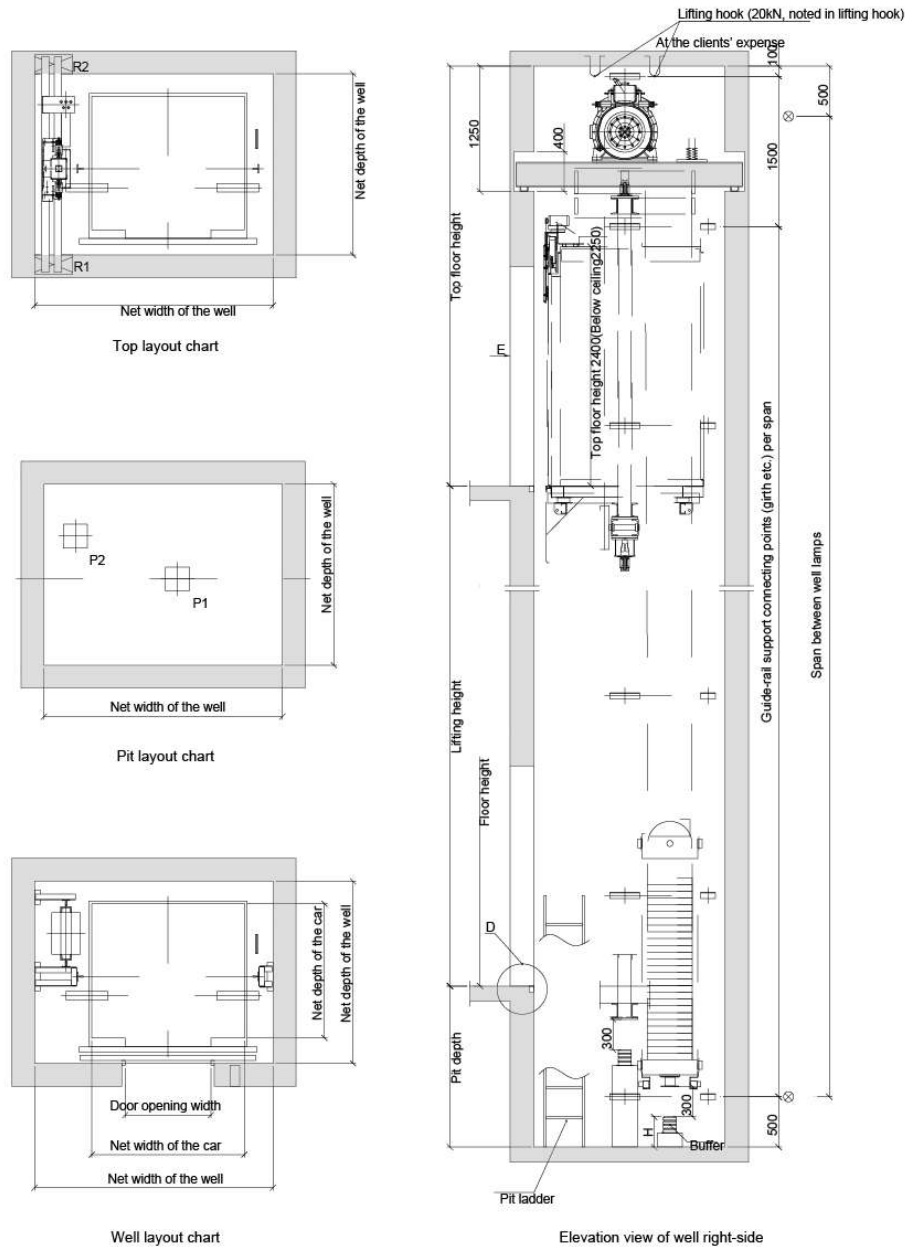
SMALL MACHINE ROOM PASSENGER ELEVATOR CONSTRUCTION SKETCH



Model	Load KG	Passenger NO.	Speed m/s	Car specification CWxCD	Door opening size JxOPH	Well size HWxHD	Machine room size MRWxMRD	Pit depth Pit	Top floor height OH	Power	Acting force				
											R1	R2	R3	P1	P2
TKJ450/1.0	450	6	1	1100x1100	700x2100	1700x1700	1700x1700	1400	4500	3.2	28800	17200	1900	44000	35000
TKJ450/1.5			1500					4600	4.9						
TKJ630/1.0	630	8	1	1400x1100	800x2100	2000x1700	2000x1700	1400	4500	4.3	35200	21800	4300	58000	45600
TKJ630/1.5			1500					4600	6.4						
TKJ800/1.0	800	10	1	1400x1350	800x2100	2000x2000	2000x2000	1400	4500	5.4	44800	27400	5400	72000	56000
TKJ800/1.5			1500					4600	8.1						
TKJ1000/1.0	1000	13	1	1600x1400	900x2100	2200x2000	2200x2000	1400	4500	6.7	53400	32200	6000	88000	68000
TKJ1000/1.5			1500					4600	10						
TKJ1150/1.0	1150	15	1	1900x1400	1000x2100	2500x2100	2500x2100	1400	4600	7.8	55600	36300	7800	98000	75000
TKJ1150/1.5			1500					4700	11.7						
TKJ1250/1.0	1250	16	1	1900x1500	1100x2100	2500x2200	2500x2200	1400	4600	8.5	60400	39400	8500	106000	81000
TKJ1250/1.5			1500					4700	12.7						
TKJ1350/1.0	1350	18	1	1900x1600	1100x2100	2500x2300	2500x2300	1400	4600	9.2	67200	43400	8700	114000	87000
TKJ1350/1.5			1500					4700	13.8						
TKJ1600/1.0	1600	21	1	2000x1750	1200x2100	2600x2450	2600x2450	1400	4600	11	73600	47600	9600	128000	96000
TKJ1600/1.5			1500					4700	16.6						
TKJ1600/1.75			1.75					1600	4800	19.4					

The data is for design reference only. Regarding detailed parameters, please take technical drawing as criterion.
 Note: If specification exceeds above range, please contact FUJI Precision Company.

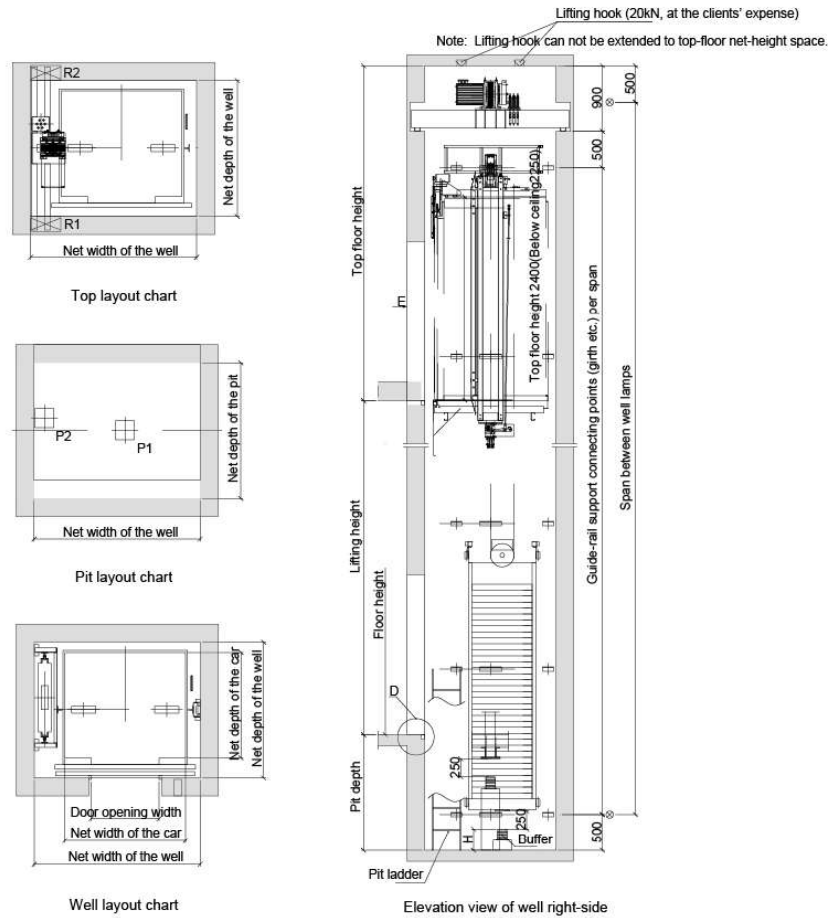
MACHINE ROOM-LESS PASSENGER ELEVATOR CONSTRUCTION SKETCH (ECONOMICAL)



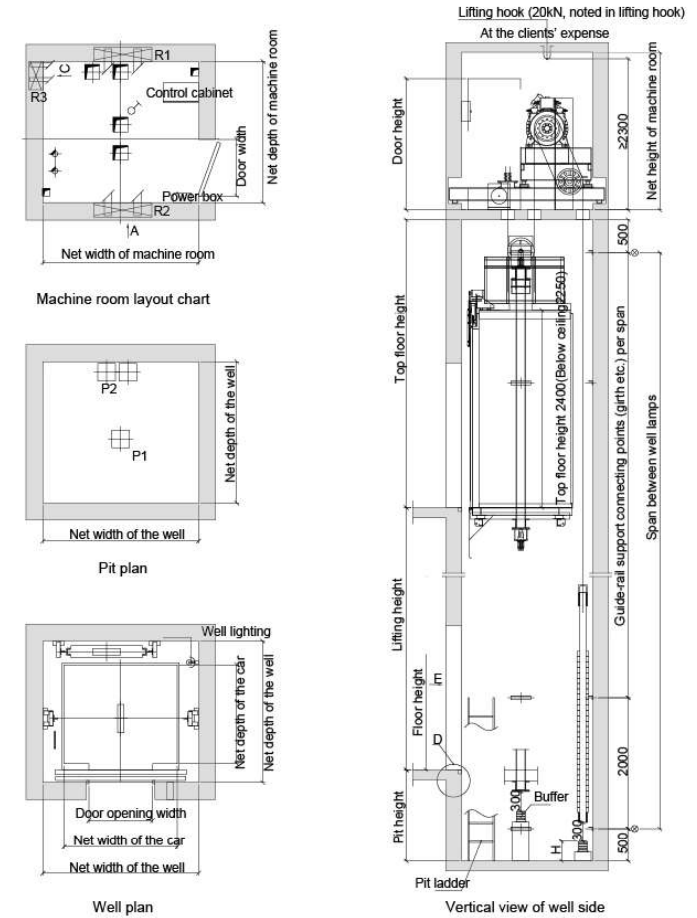
Model	Load KG	Passenger NO.	Speed m/s	Car specification CWxCD	Door opening size JxOPH	Well size HWxHD	Pit depth Pit	Top floor height OH	Power	Acting force			
										R1	R2	P1	P2
TKJW450/1.0	450	6	1	1100x1100	700x2100	2000x1700	1600	4300	3.2	16500	21000	44000	35000
TKJW450/1.5			1.5				4400	4.9					
TKJW630/1.0	630	8	1	1400x1100	800x2100	2300x1700	1600	4300	4.3	19800	26400	58000	45600
TKJW630/1.5			1.5				1700	4400	6.4				
TKJW630/1.75			1.75				1700	4400	7.5				
TKJW800/1.0			1				1600	4300	5.4				
TKJW800/1.5	800	10	1.5	1400x1350	800x2100	2300x2000	1700	4400	8.1	25700	27100	72800	56000
TKJW800/1.75			1.75				1700	4400	9.4				
TKJW1000/1.0	1000	13	1	1600x1400	900x2100	2500x2000	1600	4300	6.7	27400	39600	88000	68000
TKJW1000/1.5			1.5				1700	4400	10				
TKJW1000/1.75			1.75				1700	4400	11.7				
TKJW1150/1.0	1150	15	1	1900x1400	1000x2100	2800x2000	1600	4300	7.8	30400	43600	92000	75000
TKJW1150/1.5			1.5				1700	4400	11.7				
TKJW1150/1.75			1.75				1700	4400	13.6				
TKJW1250/1.0	1250	16	1	1900x1500	1100x2100	2900x2000	1600	4300	8.5	32200	46800	106000	81000
TKJW1250/1.5			1.5				1700	4400	12.7				
TKJW1250/1.75			1.75				1700	4400	14.9				
TKJW1350/1.0	1350	18	1	1900x1600	1100x2100	2900x2400	1600	4400	9.2	37600	46400	114000	87000
TKJW1350/1.5			1.5				1700	4500	13.8				
TKJW1350/1.75			1.75				1700	4500	16.1				
TKJW1600/1.0	1600	21	1	2000x1750	1200x2100	3000x2400	1600	4400	11	39600	56500	128000	96000
TKJW1600/1.5			1.5				1700	4500	16.6				
TKJW1600/1.75			1.75				1700	4500	19.4				

The data is for design reference only. Regarding detailed parameters, please take technical drawing as criterion.
Note: If specification exceeds above range, please contact FUJI Precision Company.

MACHINE ROOM-LESS PASSENGER ELEVATOR CONSTRUCTION SKETCH (COMPACT)



HIGH SPEED ELEVATOR CONSTRUCTION SKETCH



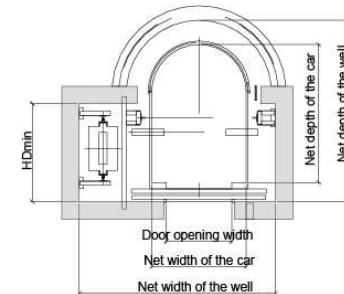
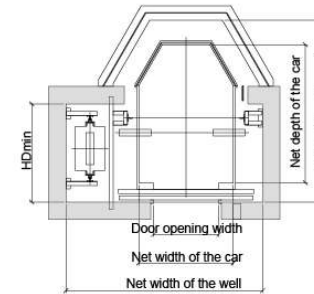
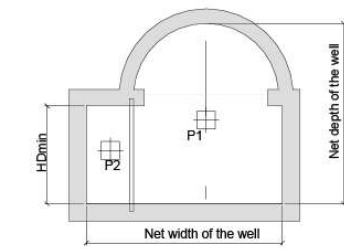
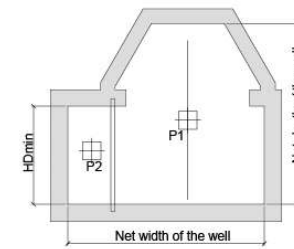
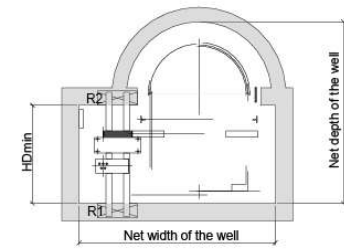
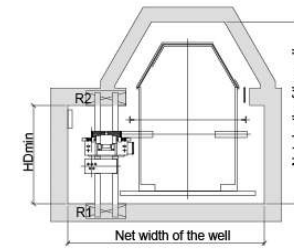
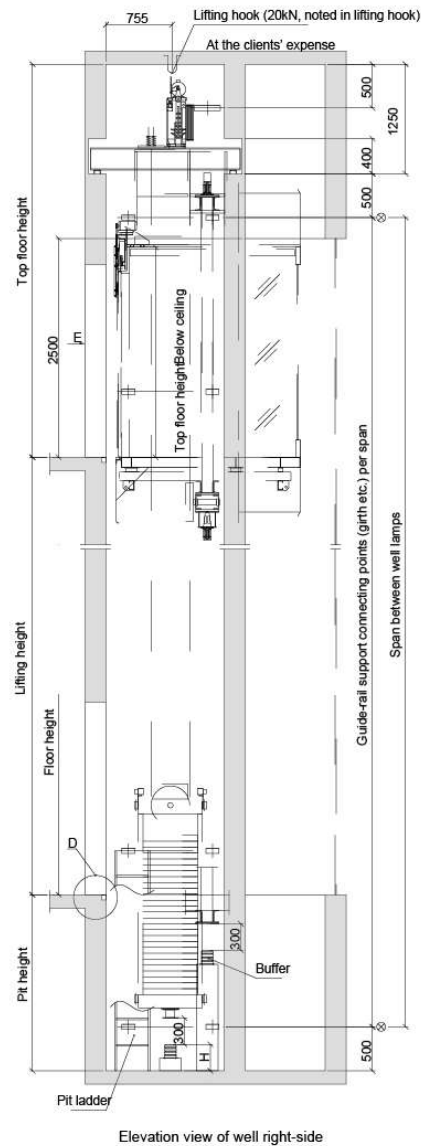
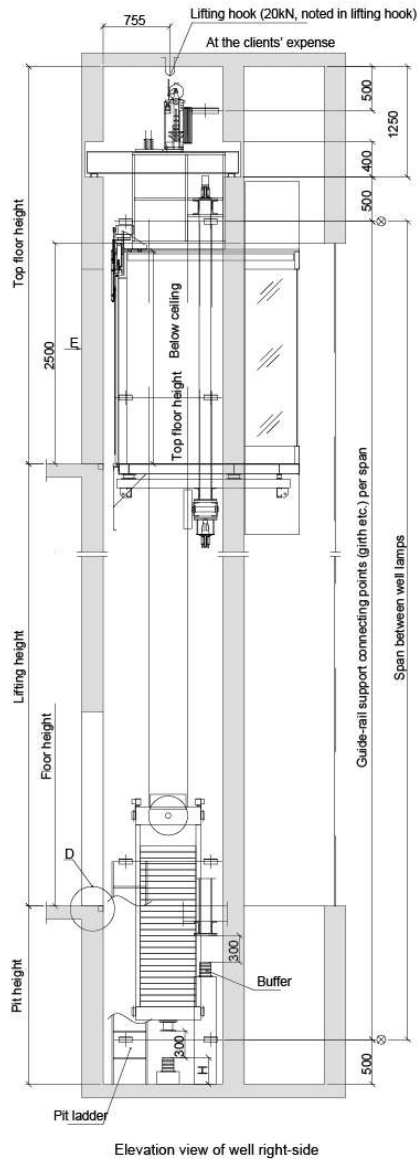
Model	Load KG	Passenger NO.	Speed m/s	Car specification CWxCD	Door opening size JJxOPH	Well size HWxHD	Pit depth Pit	Top floor height OH	Power	Acting force			
										R1	R2	P1	P2
TKJW630/1.0	630	8	1	1200x1350	700x2100	1850x1750	1500	4600	4.0	19800	26400	58000	45600
TKJW630/1.5			1.5				4700	6.3					
TKJW630/1.75			1.75				4800	7.3					
TKJW800/1.0	800	10	1	1400x1350	800x2100	2050x1750	1500	4600	5.4	25700	27100	72800	56000
TKJW800/1.5			1.5				4700	8.1					
TKJW800/1.75			1.75				4800	9.4					
TKJW1000/1.0	1000	13	1	1600x1400	900x2100	2250x1800	1500	4600	6.7	27400	39600	88000	68000
TKJW1000/1.5			1.5				4700	10.1					
TKJW1000/1.75			1.75				4800	11.8					

The data is for design reference only. Regarding detailed parameters, please take technical drawing as criterion.
Note: If specification exceeds above range, please contact FUJI Precision Company.

Model	Load KG	Passenger NO.	Speed m/s	Car specification CWxCD	Door opening size JJxOPH	Well size HWxHD	Machine room size MRWxMRD	Pit depth Pit	Top floor height OH	Power	Acting force				
											R1	R2	R3	P1	P2
TKJ630/2.0	630	8	2	1400x1100	800x2100	2000x1800	2000x1800	1700	5000	8.2	44800	27400	5400	72000	56000
TKJ800/2.0	800	10	2	1400x1350	800x2100	2000x2050	2000x2050	1700	5000	10.9	44800	27400	5400	72000	56000
TKJ800/2.5			2.5					1900	5200	13.5					
TKJ800/3.0			3					2100x2050	2100x2050	3200					
TKJ1000/2.0	1000	13	2	1600x1400	900x2100	2200x2100	2200x2100	1700	5000	13.3	53400	32200	6000	88000	68000
TKJ1000/2.5			2.5					1900	5200	16.8					
TKJ1000/3.0			3					3200	5700	20.3					
TKJ1000/4.0			4					2300x2100	2300x2100	4000					

The data is for design reference only. Regarding detailed parameters, please take technical drawing as criterion.
Note: If specification exceeds above range, please contact FUJI Precision Company.

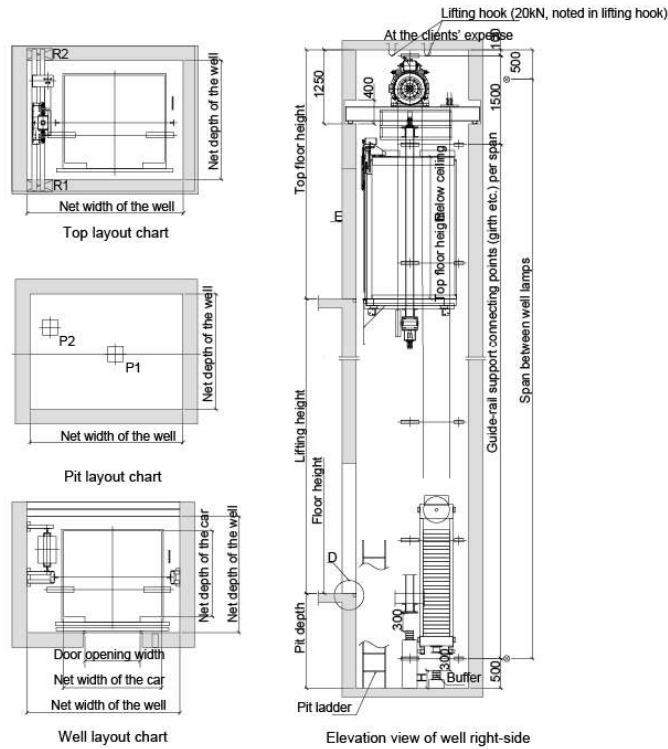
MACHINE ROOM-LESS OBSERVATION ELEVATOR CONSTRUCTION SKETCH (ROUND/DIAMOND)



Model	Load KG	Passenger NO.	Speed m/s	Car specification CWxCD	Door opening size JJxOPH	Well size HWxHDmin-HDmax	Pit depth	Top floor height OH	Power	Acting force			
										R1	R2	P1	P2
TGJM450/1.0	450	6	1	1000x1400	700x2100	2400x1050-2000	1800	4600	3.2	17600	22400	52000	41000
TGJM450/1.5			1900				4700	4.9					
TGJM630/1.0			1800				4600	4.3					
TGJM630/1.5	630	8	1.5	1100x1600	800x2100	2500x1200-2200	1900	4700	6.4	21200	28800	65000	52000
TGJM630/1.75			1900				4700	7.5					
TGJM800/1.0			1800				4600	5.4					
TGJM800/1.5	800	10	1.5	1200x1800	800x2100	2600x1300-2400	1900	4700	8.1	25200	35200	80000	64000
TGJM800/1.75			1900				4700	9.4					
TGJM1000/1.0			1800				4600	6.7					
TGJM1000/1.5	1000	13	1.5	1300x1900	900x2100	2700x1350-2500	1900	4700	10	29200	42800	96000	76000
TGJM1000/1.75			1900				4700	11.7					
TGJM1600/1.0			1800				4600	11					
TGJM1600/1.5	1600	21	1.5	1700x2200	1100x2100	3100x1500-2800	1900	4700	16.6	36600	63400	136000	104000
TGJM1600/1.75			1900				4800	19.4					

The data is for design reference only. Regarding detailed parameters, please take technical drawing as criterion.
Note: If specification exceeds above range, please contact FUJII Precision Company.

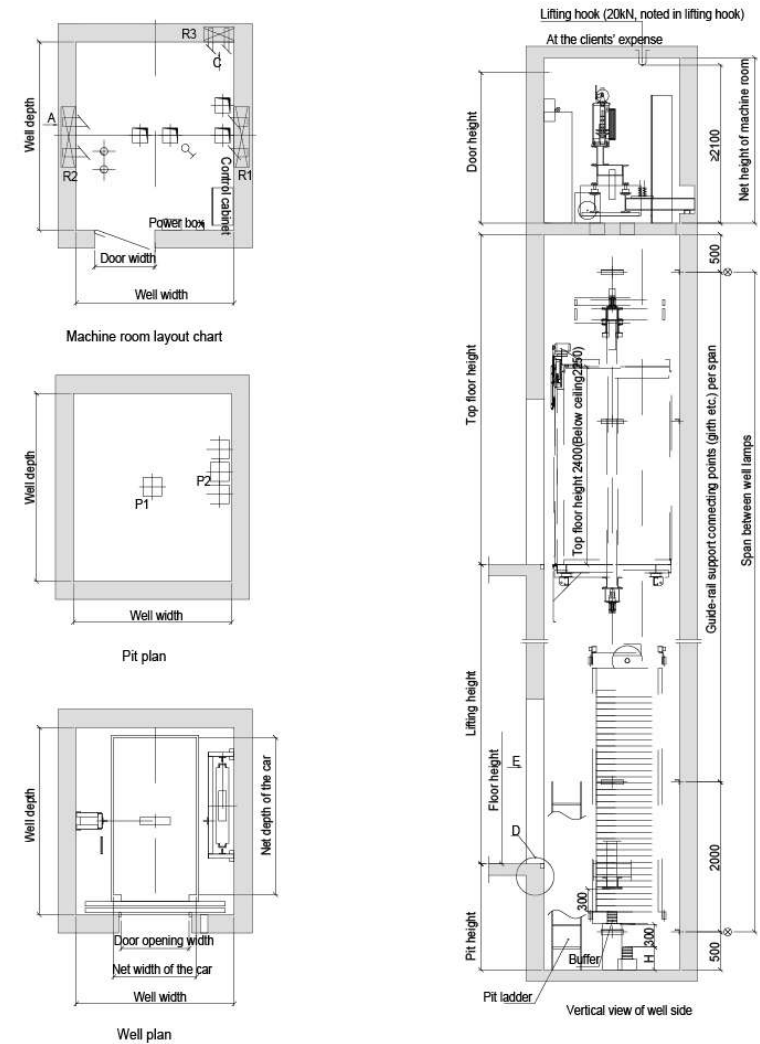
MACHINE ROOM-LESS OBSERVATION ELEVATOR CONSTRUCTION SKETCH (SQUARE)



Model	Load KG	Passenger NO.	Speed m/s	Car specification CWxCD	Door opening size JJxOPH	Well size HWxHDmin-HDmax	Pit depth Pit	Top floor height OH	Power	Acting force			
										R1	R2	P1	P2
TGJW450/1.0	450	6	1	1100x1100	700x2100	2000x1700	1600	4600	3.2	16500	21000	44000	35000
TGJW450/1.5			1700				4700	4.9					
TGJW630/1.0	630	8	1	1200x1300	800x2100	2100x1800	1600	4800	4.3	19800	26400	58000	45600
TGJW630/1.5			1700				4700	7.5					
TGJW800/1.0	800	10	1	1400x1350	800x2100	2300x2000	1600	4600	5.4	25700	27100	72800	58000
TGJW800/1.5			1700				4700	9.4					
TGJW1000/1.0	1000	13	1	1600x1400	900x2100	2500x2000	1600	4600	6.7	27400	39800	88000	68000
TGJW1000/1.5			1700				4700	10					
TGJW1000/1.75			1700	4700	11.7								
TGJW1150/1.0	1150	15	1	1900x1400	1000x2100	2800x2000	1600	4600	7.8	30400	43800	92000	75000
TGJW1150/1.5			1700				4700	11.7					
TGJW1150/1.75			1700	4700	13.6								
TGJW1250/1.0	1250	16	1	1900x1500	1100x2100	2900x2000	1600	4600	8.5	32200	46800	106000	81000
TGJW1250/1.5			1700				4700	12.7					
TGJW1250/1.75			1700	4700	14.9								
TGJW1350/1.0	1350	18	1	1900x1600	1100x2100	2900x2400	1600	4600	9.2	37800	46400	114000	87000
TGJW1350/1.5			1700				4700	13.8					
TGJW1350/1.75			1700	4700	16.1								
TGJW1600/1.0	1600	21	1	2000x1750	1200x2100	3000x2400	1600	4600	11	36000	56500	128000	96000
TGJW1600/1.5			1700				4700	16.6					
TGJW1600/1.75			1700	4700	19.4								

The data is for design reference only. Regarding detailed parameters, please take technical drawing as criterion.
Note: If specification exceeds above range, please contact FUJI Precision Company.

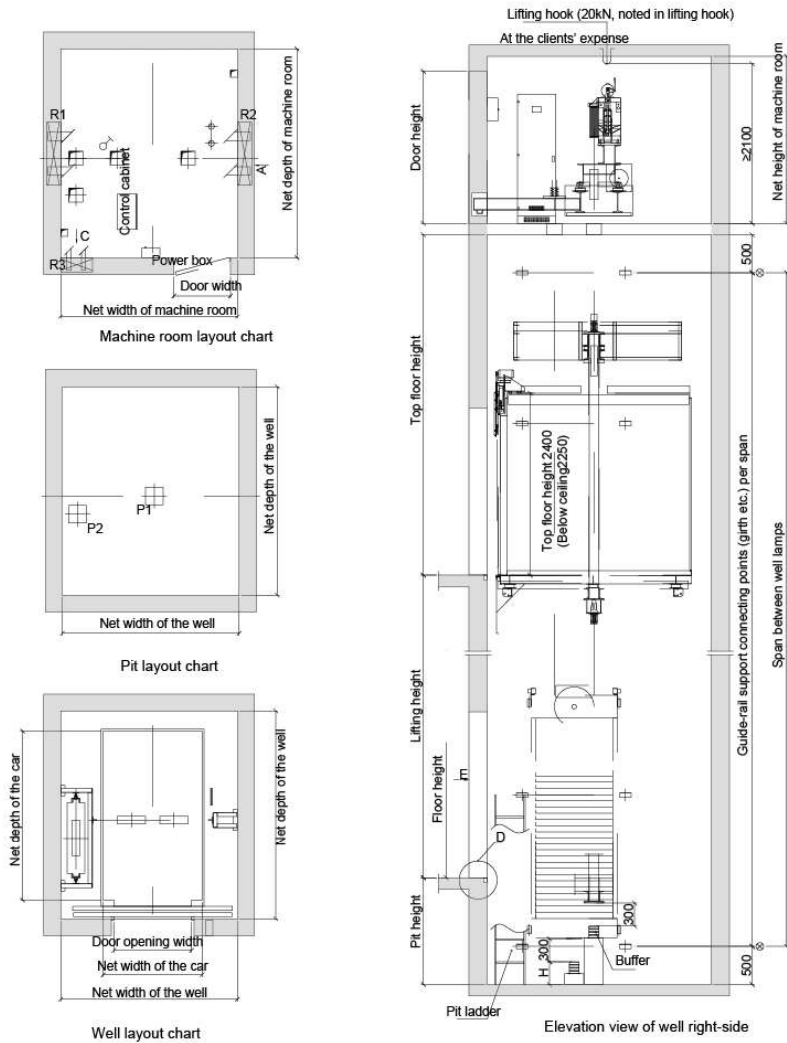
STRETCHER ELEVATOR CONSTRUCTION SKETCH



Model	Load KG	Passenger NO.	Speed m/s	Car specification CWxCD	Door opening size JJxOPH	Well size HWxHD	Machine room size MRWxMRD	Pit depth Pit	Top floor height OH	Power	Acting force				
											R1	R2	R3	P1	P2
TKJ1000/1.0	1000	13	1	1100x2100	900x2100	2100x2500	2100x2500	1400	4500	6.7	53400	32200	6000	88000	68000
TKJ1000/1.5			1500					4600	10						
TKJ1000/1.75			1600					4700	11.7						

The data is for design reference only. Regarding detailed parameters, please take technical drawing as criterion.
Note: If specification exceeds above range, please contact FUJI Precision Company.

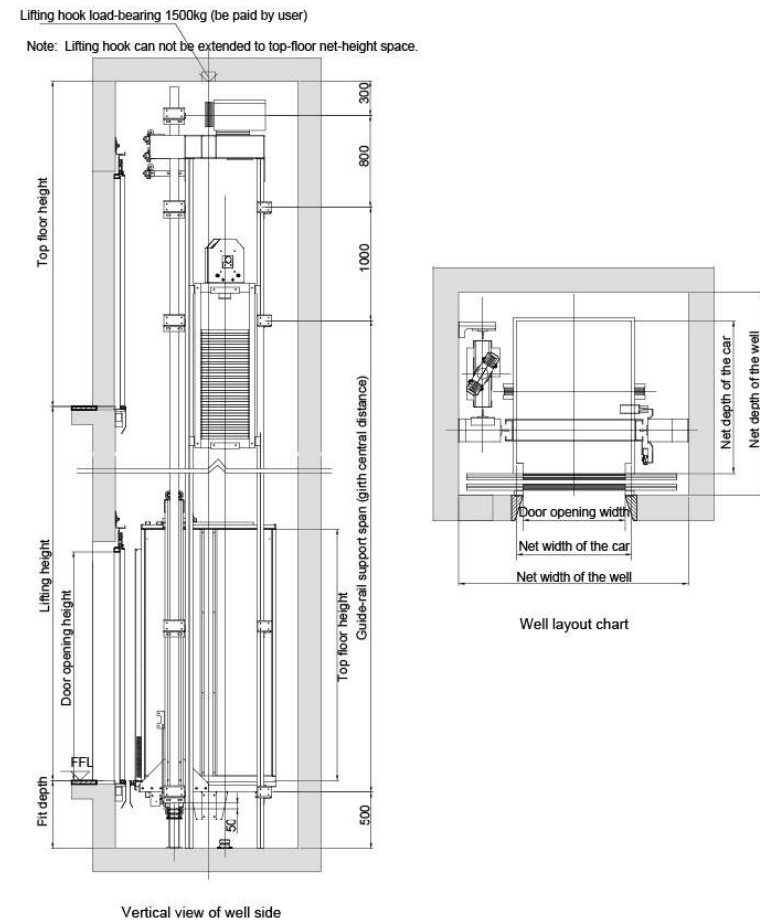
HOSPITAL ELEVATOR CONSTRUCTION SKETCH



Model	Load KG	Passenger NO.	Speed m/s	Car specification CWxCD	Door opening size JxOPH	Well size HWxHD	Machine room size MRWxMRD	Pit depth Pit	Top floor height OH	Power	Acting force				
											R1	R2	R3	P1	P2
TBJ1600/1.0	1600	21	1	1400x2400	1100x2100	2500x2950	2500x2950	1400	4600	11	73600	47600	9600	128000	96000
TBJ1600/1.5			1.5					1500	4700	16.6					
TBJ1600/1.75			1.75					1600	4800	19.4					

The data is for design reference only. Regarding detailed parameters, please take technical drawing as criterion.
Note: If specification exceeds above range, please contact FUJI Precision Company.

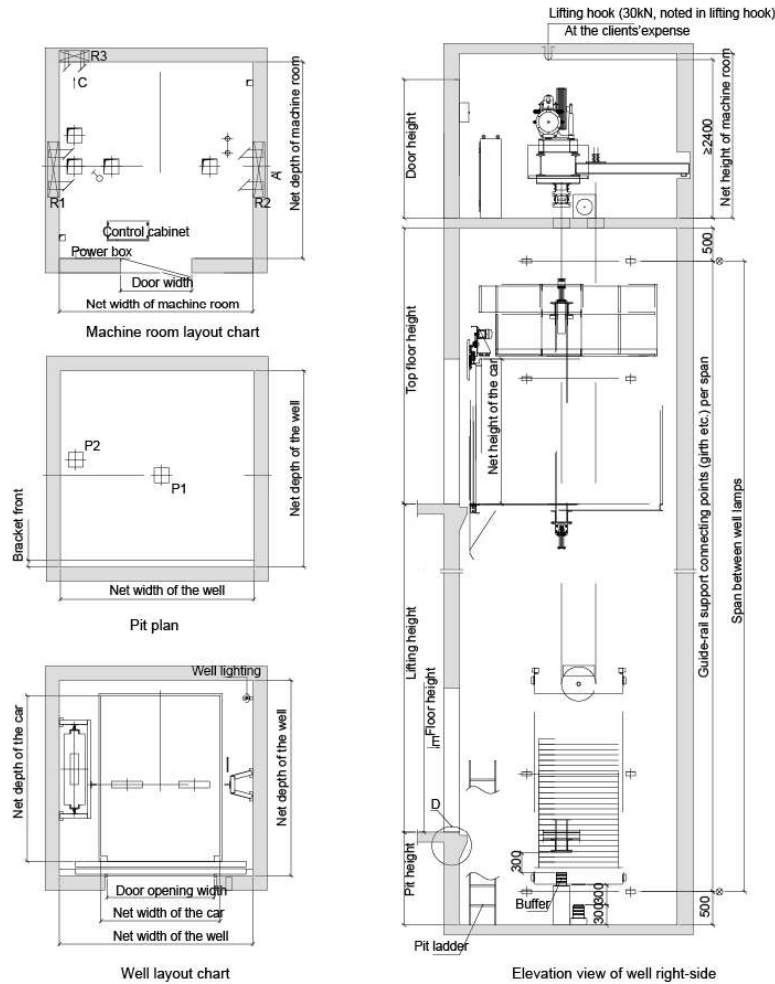
HOME ELEVATOR CONSTRUCTION SKETCH



Model	Load KG	Passenger NO.	Speed m/s	Car specification CWxCD	Door opening size JxOPH	Well size HWxHD	Pit depth Pit	Top floor height OH	Power	Door opening mode	
											TJJ320/0.4
TJJ400/0.4	400	5	900x1200	1800x1600	1.1						
TJJ320/0.4	320	4	900x1150	1600x1500							
TJJ400/0.4	400	5	900x1200	1600x1600	1.1	Side opening					

The data is for design reference only. Regarding detailed parameters, please take technical drawing as criterion.
Note: If specification exceeds above range, please contact FUJI Precision Company.

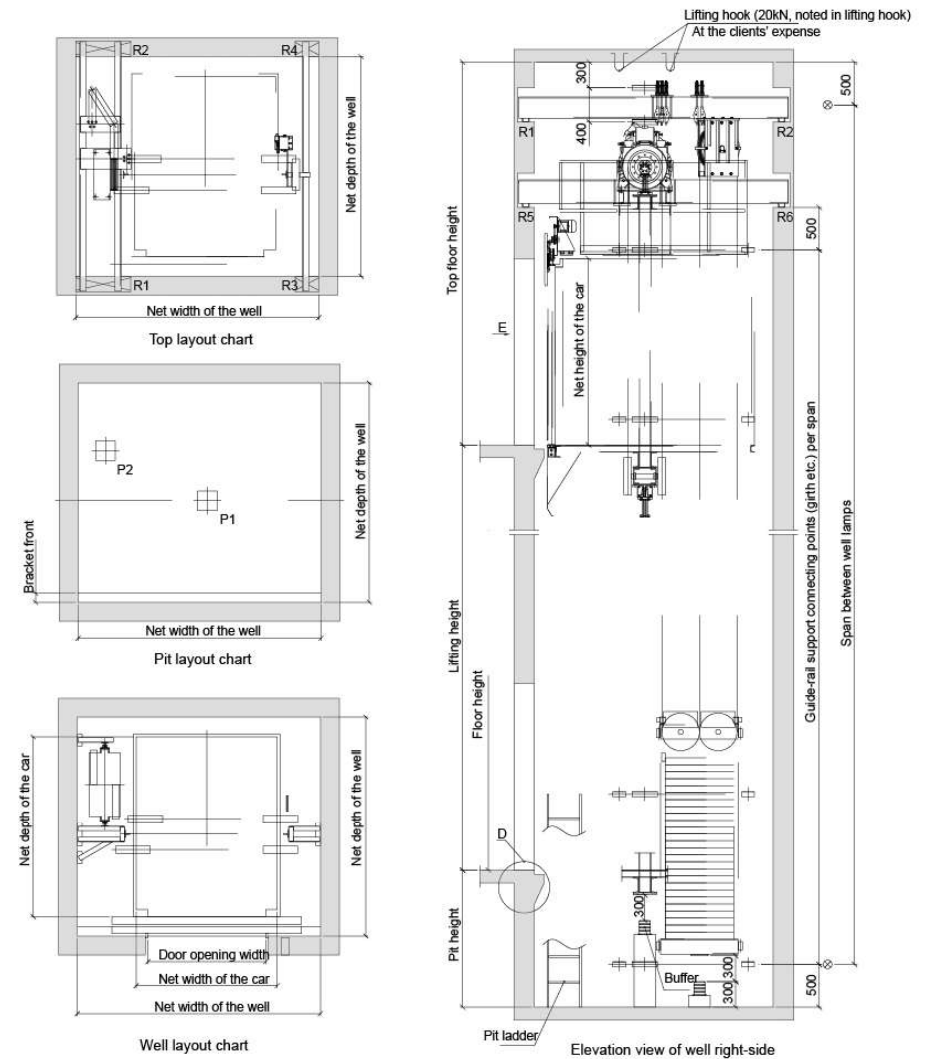
FREIGHT ELEVATOR CONSTRUCTION SKETCH



Model	Load KG	Speed m/s	Car specification CWxCD	Door opening size JxOPH	Well size HWxHD	Machine room size MRWxMRD	Pit depth Pit	Top floor height OH	Power	Acting force				
										R1	R2	R3	P1	P2
THJ1000/0.5	1000	0.5	1400x1700	1200x2100	2200x2200	2500x2500	1500	4200	7.5	54600	47800	7400	88000	68000
THJ1600/0.5	1600	0.5	1500x2300	1400x2100	2500x2800	2500x2800	1500	4200	11	67600	58200	7400	124000	92000
THJ2000/0.5	2000	0.5	1800x2300	1500x2100	2800x2800	2800x2800	1500	4200	11	85600	55200	8400	144000	104000
THJ3000/0.5	3000	0.5	2000x2800	1800x2100	3450x3500	3250x3300	1500	4200	15	144800	75200	12000	224000	164000
THJ4000/0.5	4000	0.5	2200x3300	2200x2300	3700x3800	3700x3800	1500	5000	18.5	190000	105200	16400	148000	108000
THJ5000/0.5	5000	0.5	2400x3600	2200x2300	3800x4100	3800x4100	1500	5000	22	213800	117200	18200	172000	122000

The data is for design reference only. Regarding detailed parameters, please take technical drawing as criterion.
Note: If specification exceeds above range, please contact FUJII Precision Company.

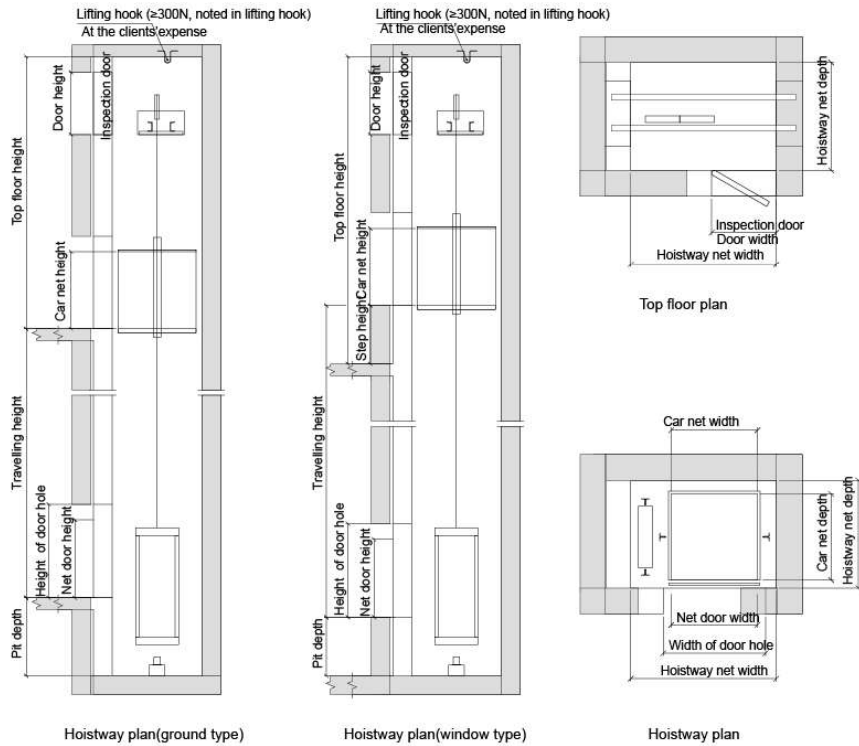
MACHINE ROOM-LESS FREIGHT ELEVATOR CONSTRUCTION SKETCH



Model	Load KG	Speed m/s	Car specification CWxCD	Door opening size JxOPH	Well size HWxHD	Pit depth Pit	Top floor height OH	Power	Acting force							
									R1	R2	R3	R4	R5	R6	P1	P2
THJW1600/0.5	1600	0.5	1800x1900	1500x2100	3100x2400	1600	4500	5.5	40400	73600	29000	29000	22600	19400	124000	92000
THJW2000/0.5	2000	0.5	1800x2300	1500x2100	3100x2800	1600	4500	6.7	40400	73600	29000	29000	22600	19400	144000	104000
THJW3000/0.5	3000	0.5	2000x2800	1800x2100	3450x3500	1600	4500	10	60600	110400	43500	43500	33900	29100	224000	164000

The data is for design reference only. Regarding detailed parameters, please take technical drawing as criterion.
Note: If specification exceeds above range, please contact FUJII Precision Company.

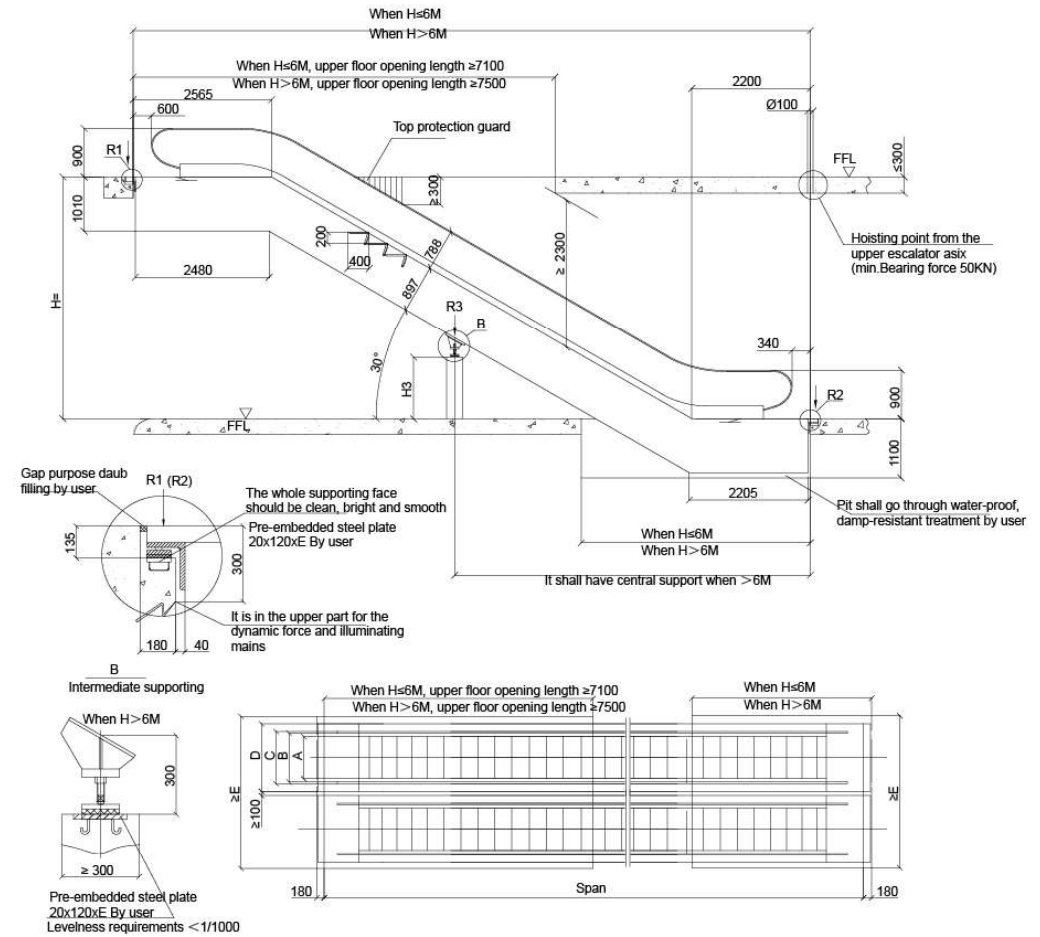
DUMBWAITER ELEVATOR CONSTRUCTION SKETCH



Loading capacity		100	200	200	250
Speed		0.4	0.4	0.4	0.4
Car net size	Width	650	950	950	950
	Depth	775	975	975	975
Door-opening type		Up/down center opening type			
Door-opening size	Width	650	950	950	950
	Height	1000	1000	1000	1200
Hoistway net size	Width	1200	1500	1500	1500
	Depth	1000	1200	1200	1200
Top floor height		3800	3800	3100	3100
Pit depth		750	750	750	750
Max travelling height		20	20	20	20
Work type		Window type	Window type	Fall to the ground type	Fall to the ground type

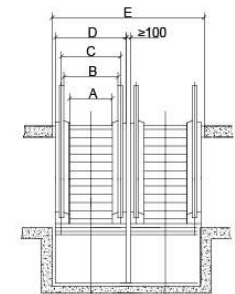
The data is for design reference only. Regarding detailed parameters, please take technical drawing as criterion.
 Note: If specification exceeds above range, please contact FUJI Precision Company.

30° ESCALATOR CONSTRUCTION SKETCH

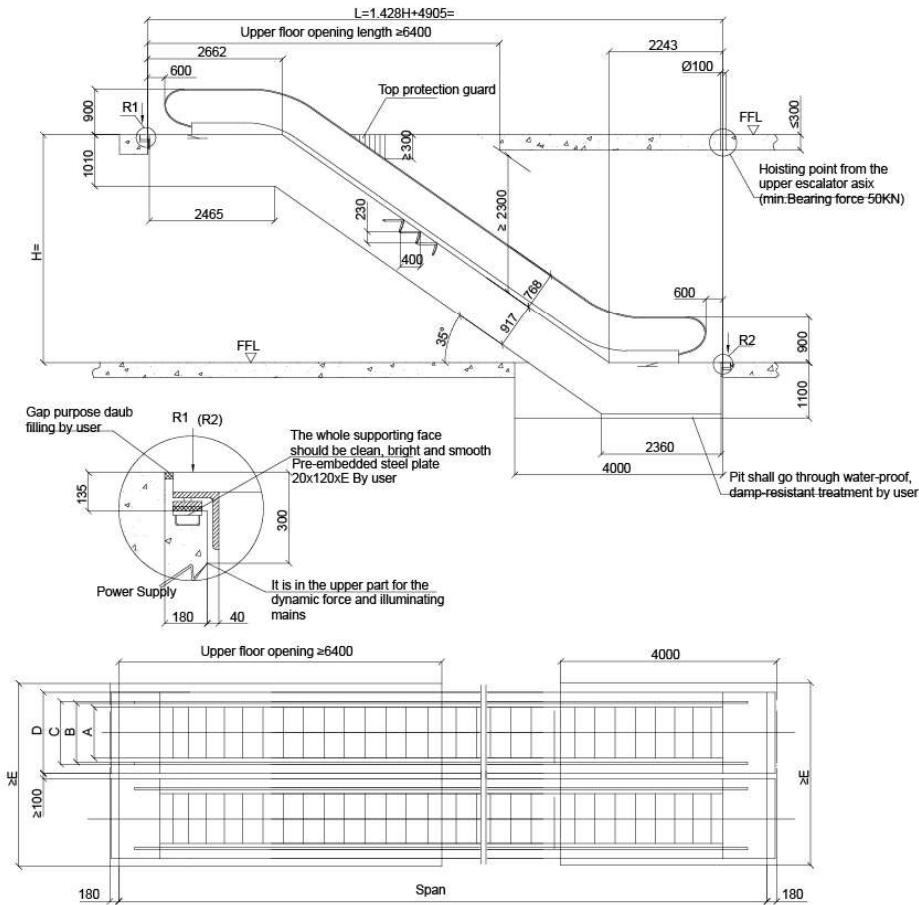


Model	Travelling height(mm)	Net weight (kN)	Supporting		Motor power kW	Transport size	
			R1 kN	R2 kN		h	l
VF800/0.5-30° (4800/h)	3000	118	104	94	5.5	2750	10900
	3500	126	112	100		2780	11890
	4000	134	120	108		2810	12880
	4500	142	128	114		2830	13870
	5000	148	136	120		2840	14860
Speed : 0.5m/s	5500	164	148	132	2860	15860	
	6000	172	156	138	2870	16850	
	3000	126	118	106	5.5	2750	10900
VF1000/0.5-30° (6000/h)	3500	134	128	114	8	2780	11890
	4000	142	136	122		2810	12880
	4500	150	146	130		2830	13870
	5000	166	158	142		2840	14860
	5500	174	166	150		2860	15860
Speed : 0.5m/s	6000	184	176	158	2870	16850	

1000	1000	1228	1238	1600	3400
800	800	1028	1038	1400	3000
Step width		A	B	C	D
Intermediate supporting		(L/2-2600)×tg30°(897/cos30°+300)			

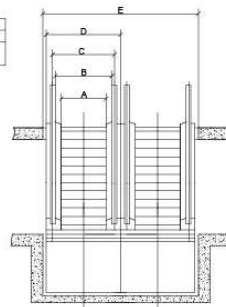


35° ESCALATOR CONSTRUCTION SKETCH

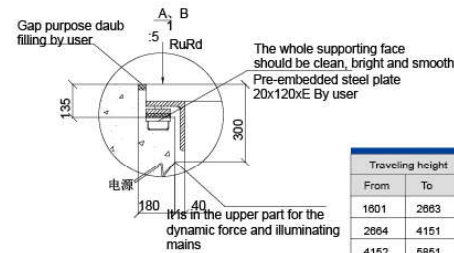
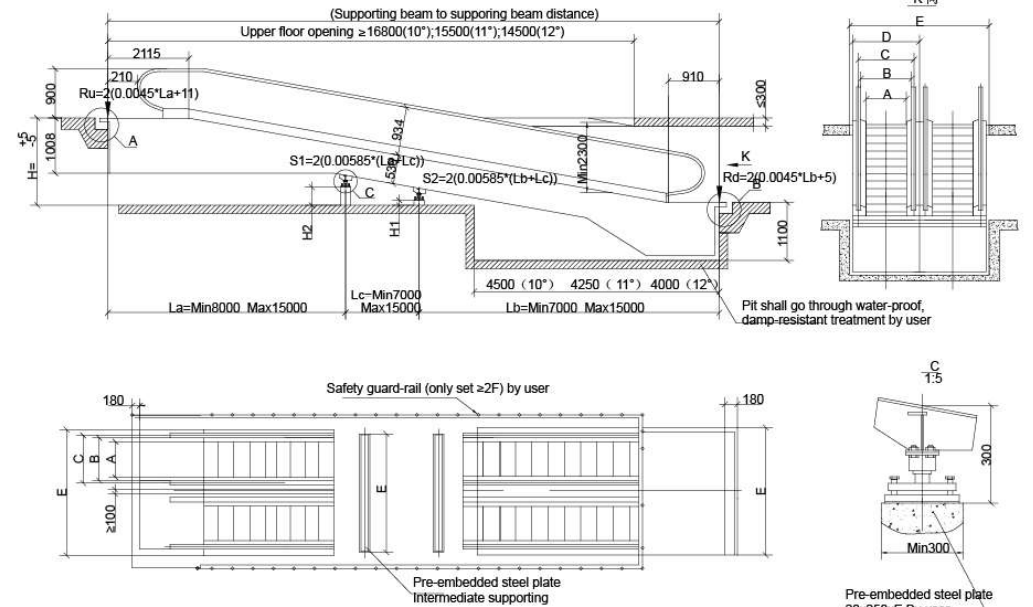


Model	Traveling height (mm)	Net weight (KN)	supporting		Motor power KW	Transport size	
			R1 KN	R2 KN		B	J
VF8000.5-35° (4800A/h)	3000	112	96	88	5.5	2850	10180
	3500	120	104	94		2890	11030
	4000	126	112	100		2920	11890
	4500	132	118	106		2940	12750
	5000	140	124	112		2970	13610
Speed : 0.5m/s	5500	146	130	118	2980	14470	
	6000	152	138	122	3000	15330	
	3000	120	112	100	5.5	2850	10180
	3500	128	120	106		2890	11030
	4000	134	128	114		2920	11890
4500	142	134	120	2940		12750	
5000	148	142	128	2970		13610	
VF10000.5-35° (6000A/h)	5500	158	154	138	11	2980	14470
	6000	166	162	144		3000	15330

	1000	1000	1228	1238	1600	3400
Step width	A	B	C	D	E	
	800	800	1028	1038	1400	3000



12° MOVING WALK CONSTRUCTION SKETCH



	1000	1000	1228	1238	1600	3400
Step width	A	B	C	D	E	
	800	800	1028	1038	1400	3000

Traveling height	Intermediate supporting		La (mm)	L b (mm)	L c (mm)
	From	To			
1601	2863				
2064	4151	1	L-7000	7000	
4152	5851	1	15000	L-15000	
5852	6000	1	15000	7000	L-22000
A	H2			H1	
10°	H2=H-(La-1995)× 0.1763-840		H1=H2-(Lc × 0.1763)		
11°	H2=H-(La-2055)× 0.1944-840		H1=H2-(Lc × 0.1944)		
12°	H2=H-(La-2115)× 0.2128-840		H1=H2-(Lc × 0.2128)		

Note: when traveling height is over 6m, construction size please consult our company

Step width	Traveling height	Speed	Rated load capacity	Inclination	Power	Power supply capacity	Rated current
800	1000-3800	0.5	4800	10,11,12	7.5	15	39
	3800-6000				11	22	58
1000	1000-3000	0.5	6000	10,11,12	7.5	15	39
	3000-4800				11	22	58
	4800-6000				15	30	78